

COMPANY INTRODUCTION



2 0 1 7

KOTEC ASSIGNED PORT FACILITIES INSPECTION & SUPERVISION
TOTAL TECHNICAL SERVICES BY KOREAN MARITIME AFFAIRS AND FISHERIES MINISTRY

HEAD OFFICE 137-858 Any-tower(8F), 7, Gangnam-daero 53-gil, Seocho-gu, Seoul, Korea
TEL 82 2 2635 4712 / FAX 82 2 2635 4726

ENGINEERING DIVISION 641-824 #49-4, Salim-Dong, Changwon, KOREA / TEL 82 55 251 6374~5 / FAX. 82 55 255 0839

POHANG OFFICE 790-190 1 Floor,171-18, Haedo-dong, Nam-gu, Pohang, Korea / TEL 82 54 275 3932

ULSAN OFFICE 360-080 5-301 Sunkyung Bldg., 1330-1, Dal-Dong, Nam-gu, Ulsan, KOREA / TEL & FAX 82 52 258 4455

Home Page <http://www.kotecst.com>

CONTENTS

THE MANAGEMENT STATEMENT	
BUSINESS OFFICE	
I . BRIEF HISTORY	
II . FEATURES OF KOTEC'S INDUSTRIAL SERVICES	
III . INDUSTRIAL SERVICES OF KOTEC (BUSINESS SCOPE)	
IV . ORGANIZATION CHART	
V . TECHNICAL RESOURCES	
VI . OVERSEAS INSPECTION RECORDS	
VII . GENERAL WORK FLOW CHART	
VIII . INSPECTION/TEST EQUIPMENT LIST	
IX . PERFORMANCE RECORD.....	
1. Petro-Chemical & Oil Refinery Facility	
2. Power Plant.....	
3. Iron & Steel Marking Plant	
4. Port Facilities	
5. Site Construction & Operating Test.....	
6. Maintenance Inspection	
7. Off-Shore Steel Structure.....	
8. Steel Structure (Steel Bridge, Building Structure, etc).....	
X . ATTACHMENTS	
1. Certificate of Authorized Inspection Company for Port Equipments.....	
2. Certificate of Engineering Subject.....	
3. Certificate of Registration for ISO 9002.....	
4. Certificate of Registered Supervisory Company	
5. Certificate of Registration for Business of NDE.....	
6. Certificate for Authorized Inspection Company for Safety Inspection of Stage facility	

THE MANAGEMENT STATEMENT

We are pleased to provide our General Pre-qualification Statement outlining the capabilities and qualifications of **KOREA TECHNOLOGY INSPECTION CO., LTD.(KOTEC)**. The industrial service of KOTEC is an "Independent Third Party Inspection Agency" which operates in all aspects of verification services. We have recently been expanding our activities into various industrial fields in response to our client's growing demands. KOTEC has substantial proven experience in handling Safety, Quality Assurance and Quality Control aspects of complete industrial plants as well as individual units built into existing installations.

KOTEC was founded in 1991 as an "Inspection company". Since that time, we participated in shop inspection of Industrial Equip. of Petro-chemical plant and Iron and Steel Making Plant, Loading and Unloading equipment, and also participated in the supervision of Field Installation and Operation Test. And also carrying out "Third Party Inspection" of equipment and materials, port facilities, petro-chemical plants, nuclear power plants, steel structures, power plants, offshore structures, transportation equipments, oil storage tanks, pipeline, steel bridges and other facilities. Our involvement in various kinds of services, such as supervision services for pressure vessels under construction, periodic inspection services, non-destructive testing, safety diagnosis of public and other facilities, machinery and plants is growing as our client's needs for such services increase.

Especially, now we perform the quality control work as turn key basis for the project. We run local branch offices at the major industrial complex in Korea to prevent loss from transportation and enforce the efficiency of work. These offices are operated by the inspection managers with a lot of experience for the shop inspection and construction work.

We provide inspection services for Cargo Handling Equipment, Petro-chemical Plant Equipment and Steel Bridge Construction. Our excellent inspection services are offered so that clients can maintain their equipment in

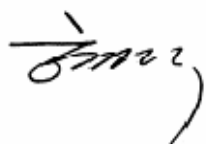
the best quality condition possible and thereby improve their operational efficiency. Our accumulated experiences and abilities provide a base from which we can offer innovative inspection techniques. We have been appointed by the Korean Government as an "Inspection Agency" for Inspection / Supervision of port facilities such as Container Crane, Transfer Crane, Level Luffing Crane, Unloader, Jib Crane, Stacker/Reclaimer and Yard Tractor. Our extensive business activities abroad have been receiving much acclaim. Instead of manufacturer, our inspection services have been performed for export products by PSA in Singapore, KPM in Malaysia, PATRICK in Australia, ESC in Canada etc.



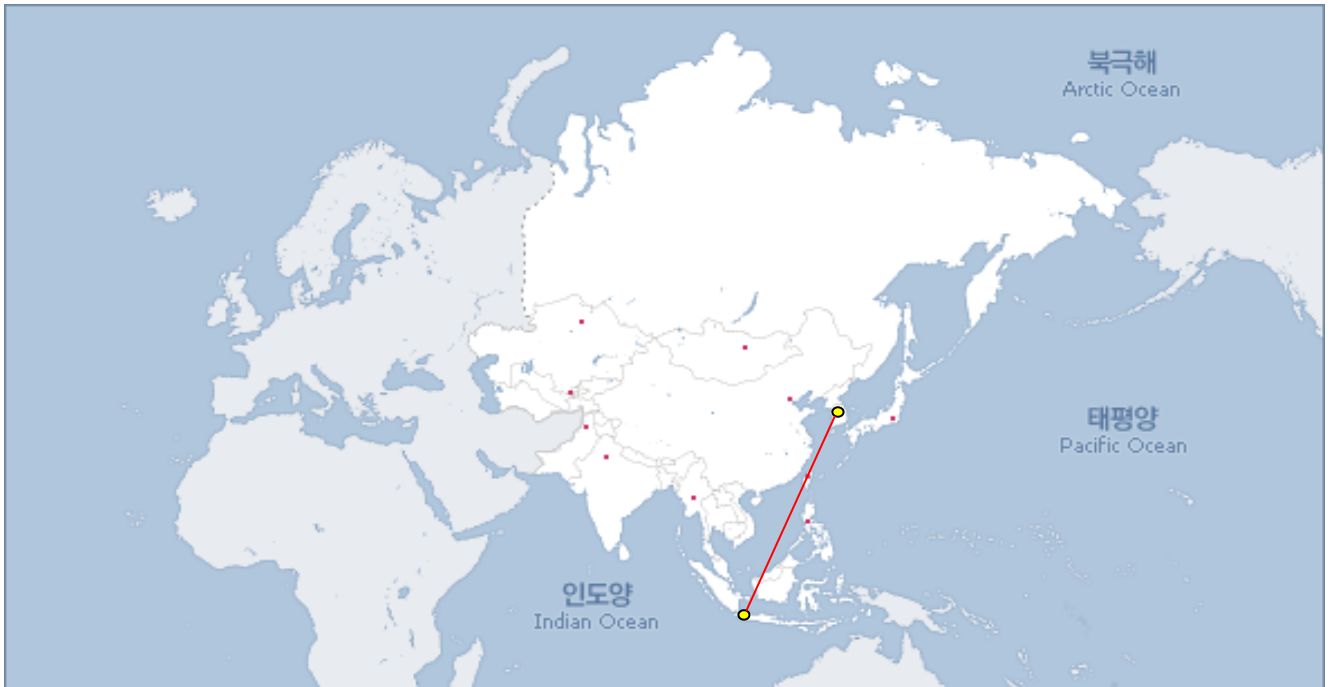
KOTEC's intention is to "**serve the progress of the human society with technology**" and it does its best to further development of its high technology and to keep reliability. We hope this profile will assist you. Should you have any further questions for details, please feel free to contact the our offices or our home page on internet

addressed www.kotecport.com

Sincerely
Hong, Jong-Hee
President



BUSINESS OFFICE



DOMESTIC & OVERSEAS BRANCH OFFICE

DESCRIPTION	ADDRESS	TEL/FAX
Head Quater	Any-tower(8F), 7, Gangnam-daero 53-gil, Seocho-Gu, Seoul, Korea	TEL.:(02)2635-4712 FAX.:(02)2635-4726
Changwon Branch (Engineering Office)	#49-4, Sarim-Dong,Changwon, Kyungnam	TEL.:(055)251-6374 FAX.:(055)255-0839
Pohang Branch	#171-18, 1 Floor, Haedo-2dong, Nam-Gu, Pohang	TEL.:(054)275-3932 FAX.:(054)276-3932
Ulsan Branch	#1330-1, Dal-Dong, Nam-Gu, Ulsan	TEL.:(052)258-4455 FAX.:(052)258-4455
INDONESIA BRANCH	Jl.Jend.Ahmad Yani No.106 Cilegon 42421, Banten Indonesia. (SUCOFINDO CILEGON)	TEL.:(62)812-10-065992

I. BRIEF HISTORY

1991. 02. 10	Established of Korea Tech Inspection Company. Participated in shop inspection of Industrial Equip., Iron and Steel Making Plant, Loading and Unloading equipment, and also participated in the supervision of Field Installation and Operation Test.
1993. 10. 01	Participated in the Inspection and Expediting Services for Petrochemical equipments and Building Structures
1994. 07. 01	Enlarged company as limited company. Registered in the field of welding and NDE of KIST (Korea Institute of Science and Technology)
1996. 09. 01	Established Jeonwoo Engineering Architecture of Professional Engineer
1997. 12. 02	Certified by Korean Government (Ministry of Maritime and Fisheries) as the Inspection Agency of Harbor Equipments.
1999. 08. 09	Appointed to a member of the technical consulting committee by KISTEC
2001. 09. 07	Awarded ISO 9002 from Bureau Veritas
2002. 03. 05	Registered as the Authorized Supervisory Company for Government.
2004. 05. 10	Appointed to a member of the Judging Committee of the Private Investment Project for SOC from the Ministry of Construction and Transportation of Korea
2005. 03. 10	Awarded an appreciation plaque from POSCO's CEO connected with the successful 3 rd party inspection service of QPSS, China
2005. 03. 19	Appointed to a member of the consulting committee for establishment and renewal of the design guideline and work standards by Ministry of Maritime Affairs and Fisheries
2005. 04. 30	Awarded an appreciation plaque from CEO of Daelim Industrial Co., Ltd. in connection with the good cooperation and well activity in the inspection service
2005. 05. 02	Appointed to a member of committee for Control system Improvement of the Harbor equipments by Ministry of Maritime Affairs and Fisheries
2005. 06. 17	Awarded the SeoKyung Imerging CEO management from Seoul Economic Newspaper.

2005. 11. 14	Awarded an appreciation plaque from CEO of Hyundai Oil Bank in connection with the successful achievement of Clean Fuels Project
2005. 11. 25	Awarded an appreciation plaque from CEO of POSCO-China connected with the successful achievement of POS-FPC Project in China.
2006. 01. 10	Established KOTEC-China in Qingdao, China
2006. 11. 22	Awarded an appreciation plaque from CEO of POSCO connected with the Successful achievement of ZPSS Expansion Project in China
2010. 03. 05	Registered as full membership by Korea Construction Consulting Engineers Association(Reg. No. 5-Seol-38)
2010. 03. 11	Awarded the Certificate of Patent for the Power Supply Manhole Structure of Port Facilities
2011. 11. 02	Registered as Cooperative Firm by KEPCO, in the field of inspection for steel structure and power plant equipment.(Reg. No. 935-00062)
2012. 05. 09	Certified as Safety Inspection Company for stage Facilities by the Minstry of Culture, Sports and Tourism of Korean Government(Reg. No. 2012-1)
2013. 01. 02	Established the Indonesia Branch of Korea Tech Inspection Company
2014. 03. 03	Established the Laboratory of Korea Tech Inspection Company

II . FEATURES OF KOTEC'S INDUSTRIAL SERVICES

KOTEC is a highly rated and trustworthy company aiming to achieve the status of a global technical consultant for inspection and quality control for various plants and steel structures, such as petro-chemical, oil refinery, steel making, thermal and nuclear power generating, bridge, building and off-shore structures, in respect of their raw materials, fabrication, assembly, installation, maintenance, and also for chemical, mechanical, physical and environmental analysing, testing and measuring equipment.

KOTEC possess many highly qualified and well experienced inspectors and also many kinds of equipment to provide its clients with satisfactory service and advice for the above industrial fields and is always prepared to satisfy all needs of its customers.

KOTEC is now executing many kinds of inspection and supervision services as well as consultation for domestic and overseas clients and is especially acting as authorized inspectorate of various governments abroad obtaining their high regard.

KOTEC's intention is to "serve the progress of the human society with technology" and it does its best to further development of its high technology and to keep reliability.



III. INDUSTRIAL SERVICES OF KOTEC (BUSINESS SCOPE)

◆ *Dwg. Approval and Calculation Survey for Construction*

The technical review and assessment of drawings and determination of strength of steel structure and industrial plants are major technical services of the company.

The above activities are carried out strictly in compliance with international rules and regulations. For example, in the case of boom girder deflection and local buckling for container crane, the structural integrity is confirmed through structure analysis package using STAAD #3 and SAP#2000.

◆ *Equipment Inspection for Petro-Chemical Plant, Steel Making Plant & Power Plant*



To the company, Pressure Vessels, Heat Exchanger, Tower, Drum, Screen Panels, Reactor and etc are the items which much accumulated inspection technology. We sure that we can provide quality guarantee for the safety, reliability and endurance of these items through severe and well-organized inspection system of the company.



◆ *Structure Inspection*

The company has tightened inspection service system for Steel Structure. Almost these kinds of services are provided with above technical assessment as like structural strength and fatigue analysis.

- Off-Shore Steel Structure
- Steel Bridge
- Building and Plant Steel Structure



◆ *NDT & Machinery Diagnosis*

Welding and non-destructive tests are key technologies which are indispensable for ensuring safety not only in steel structures but also in port facilities and other industrial plants. A diagnostic team, consisting of NDT experts and other experienced inspectors, is conducting survey and other operations in the fields of industrial facilities, structures, steel bridges, machinery, electricity and vibration.

♠ **Periodic Inspection & Survey**



The company has tightened periodical service system for port facilities and petro-chemical plant. Especially, with early introduction of assigned inspection & supervision agency for port facilities by Korean Government, the company is carried out the periodic survey for Korean Port Facilities(Container Crane, Transfer Crane, Level-Luffing Crane, etc) according to Korean Law. These services of the company should be performed strictly and faithfully to meet our client's anticipations.

♠ **Third Party Inspection**



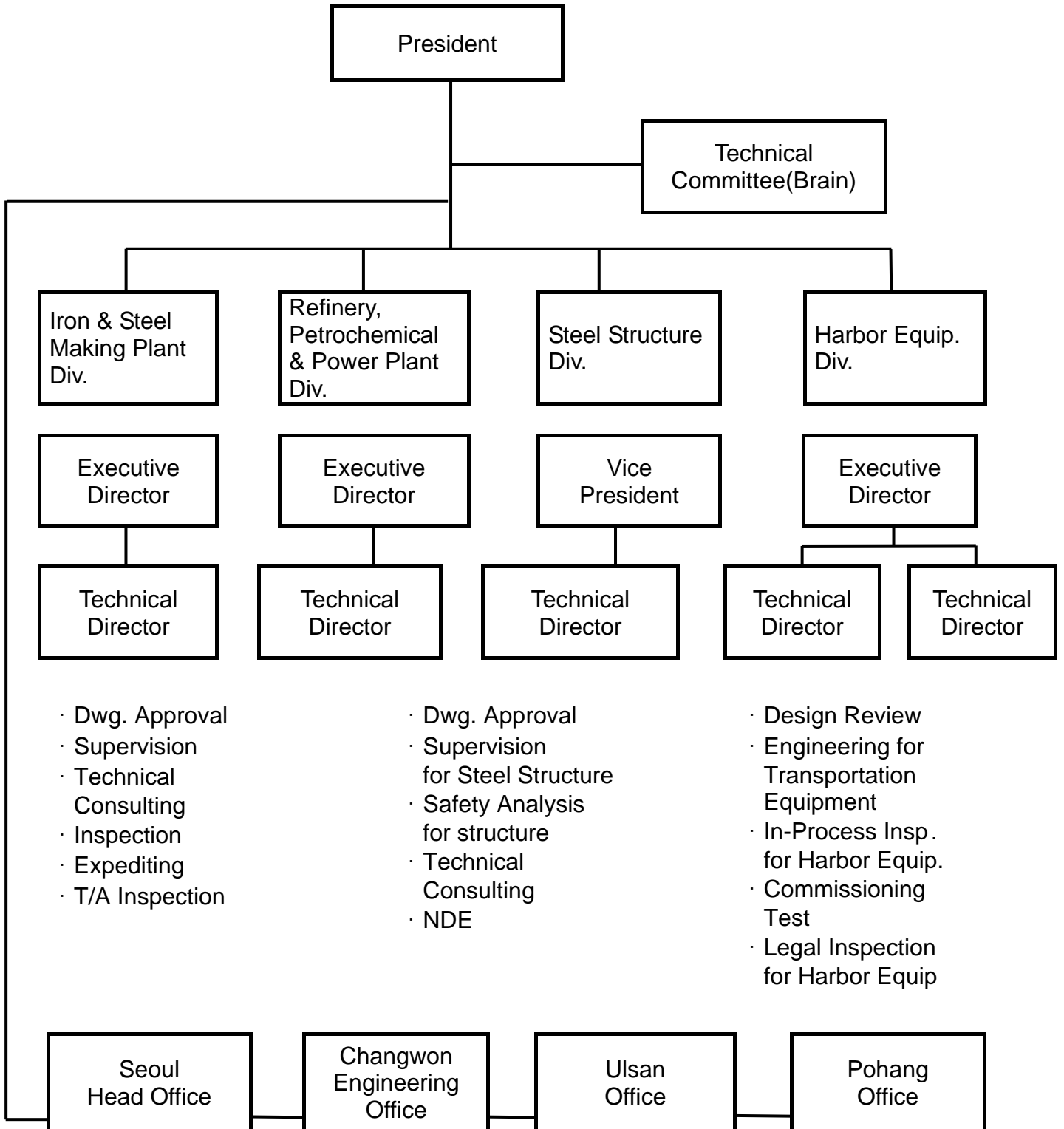
The company conducts third party inspection for materials, industrial facilities and equipment such as pressure vessels, steel bridges, cranes, engines, reducers, pumps and motor, being exported or used domestically. The company performs inspections on various industrial equipments and plant facilities procured from both domestic and foreign sources.

♠ **Conclusion**

Looking for 21st century, the staff of **KOTEC** is committed to making the company an effective organization that contributes to the welfare of man-kind. Ensuring various fields of industrial plant quality and protection of client's properties through continuous research activities and enhancement of industrial technology, we believe, are major ongoing contributions of **KOTEC**.



IV. ORGANIZATION CHART



V. TECHNICAL RESOURCES

Description	Head Office (Seoul)	Changwon Office	Ulsan Branch	Pohang Branch	Total
Welding Professional Engineer		4			4
Industrial Machinery Professional Engineer	1	4		1	6
AWS Certified Welding Inspector		4	1		5
ASNT Level III Inspector		2			2
Architect Engineer	2				2
Mechanical Engineer	6	14	1	4	25
Electrical Engineer	1	5			6
Welding Engineer	2	5			7
NDE Engineer	1	6			7
Mechanical Inspector	18	32	10	5	65
Electrical Inspector	4	1			5
TOTAL	35	77	12	10	134

VI. OVERSEAS INSPECTION RECORDS

1. China

No.	Manufacturer	Location	Item to be inspected	Remarks
1	Zhangjiagang Sanctum Chemical Machinery	Zhangjiagang, Jiangsu	Pressure Vessel	Resident Inspection
2	Xin Xiang Crane Mfg. Works	Xin Xiang, Henan	Crane, Hoist	
3	Suzhou Sail Star Boiler Mfg. Co.	Suzhou, Jiangsu	Boiler	
4	Suzhou SIQI Electric Instrument Sets Co., Ltd.	Suzhou, Jiangsu	Battery Charger, Local Control Board	
5	Wuxi Shuanghuan Electric Co., Ltd.	Wuxi, Jiangsu	LV Switchgear	
6	Changzhou Transformer Mfg. Co., Ltd.	Changzhou, Jiangsu	10KV Transformer	
7	Jiangyin Engineering & Machinery Crane Fixture Plant Co., Ltd.	Jiangyin, Jiangsu	Furnace Casing	
8	Shanghai Crane & Conveyor Works	Shanghai	Crane, Hoist	
9	Beijing Beikai Electric Co., Ltd.	Beijing	110KV GIS	
10	Shandong Modern Dachu Electric Co., Ltd.	Shandong	110KV Transformer	
11	Shandong Luneng Intelligence Technology Co., Ltd.	Jina, Shandong	Relay Panel, SCADA System	
12	Dalian LG Industrial System Co., Ltd.	Dalian, Liaoning	LV Switchgear	
13	Shanghai Tengen M&E Co., Ltd.	Shanghai	LV Switchgear MCC	
14	Shanghai Zhenhua Port Machinery Co., Ltd.	Shanghai	Container Crane RMQC	Resident Inspection
15	Nantong High and Medium Pressure Valve Co., Ltd.	Nantong, Jiangsu	Valve	Resident Inspection
16	Wujiang Yongsheng New Type Packing & Gasket Co., Ltd.	Wujiang, Jiangsu	Packing & Gasket	
17	Yingliu Casting Co., Ltd.	Houshan, Hebei	Stainless Steel Casing	Resident Inspection
18	Feilang Valve Mfg. Co., Ltd.	Zhangjiagang, Jiangsu	Valve	Resident Inspection
19	Shanghai Heavy Machinery Plant	Shanghai	R.M Housing	Resident Inspection

No.	Manufacturer	Location	Item to be inspected	Remarks
20	CITIC Heavy Machinery Corp.	Luoyang, Henan	Entry and Exit Equip. for Hot Strip Mill Line	Resident Inspection
21	Hengyang Hengye Heavy Machinery	Hengyang, Huonan	Skin Pass Mill	Resident Inspection
22	Angang Heavy Machinery	Anshan, Liaoning	Roller Table	Resident Inspection
23	Chang Li Machinery Co.	Jiangjiagang, Jiangsu	Entry & Exit Equip. for APL	Resident Inspection
24	Nantong Jintonglin	Nantong, Jiangsu	Fan & Blower	
25	SHMECC	Jiangyin, Jiangsu	Furnace Door Mechanism	
26	Guomao Guotai	Changzhou, Jiangsu	Reducer	
27	Hyosung Tianwei Tr. Co. Ltd.	Baoding, Hebei	Transformer	Resident Inspection
28	Wuxi Petrochemical Co.	Wuxi, Jiangsu	Storage Tank	Resident Inspection
29	Henan Xinxiang Vibrator Co., Ltd.	Xinxiang, Henan	Vibrator	
30	Wuxi Great Currency Equip. Co., Ltd.	Qidong, Jiangsu	HNO ₃ Storage Tank	
31	Hyundai Nanzi Electric Co., Ltd.	Yangchung, Jiangsu	6.6KV Switchgear	
32	Hanhwa Co., Ltd.	Jiangjiagang, Jiangsu	Nox Equipment	
33	ShanDong Wendeng Co., Ltd.	Mundeng, ShanDong	Combustion Air Blower	
34	Lioyang Transformer Co., Ltd.	Shenyang, Liaoning	Power Transformer	
35	CCKC	Shanghai	Pump	
36	Jiangsu Hengfa	Changsu/ Jiangsu	Hyd. Cylinder etc	

No.	Manufacturer	Location	Item to be inspected	Remarks
37	Qidong Lubrication Co., Ltd.	Qidong/ Jiangsu	Lubrication Equipment	
38	Ninbo Dongli Machinery Co	Ningbo/ Jouzhang	Reducer	
39	Nanjing Jinsanli Rubber Plastic Co.	Nanjing	Roll	
40	Jangdu Yongjian Co., Ltd.	Yangzhou/ Jiangsu	Hyd. Cylinder	
41	Yaentai Manoir	Yantai/ ShanDong	Roll	
42	Taiyuan Heavy Industries Co., Ltd.	Taiyuan/ Shansi	Moroil & Thrust Brg.	
43	Taiyuan Tuoxin Hyd. Lubrication Co.	Taiyuan/ Shansi	Oil Spray System	
44	ZPMC	Changxing/ Shanghai	Container Crane	Resident Inspection
45	Shanghai Crane Co., Ltd.	Shanghai	Overhead Crane	Resident Inspection
46	BLHI/CMMC	ChangZhou	STS TCM Facility	
47	CMMC-Danielli	ChangZhou	CCL Segment	Resident Inspection
48	Younghwa Heavy Ind.Co.,Ltd.	Penglai Shandong	Steel structure	Resident Inspection
49	PEZ	Zhangjiagang	STS Hot Rolling Facility	Resident Inspection
50	PEZ	Zhangjiagang	STS Cold Rolling Facility	Resident Inspection
51	PEZ	Zhangjiagang	ACL Facility	
52	China First Heavy Industries	Dalian	Heavy Reactor	Resident Inspection
53	JiangNan Boiler	Zhangjiagang	Heat Exchanger	Resident Inspection
54	HaiLu Boiler	Zhangjiagang	Waste Heat Boiler	Resident Inspection
55	DALIAN BERY HEAVY INDUSTRY	DALIAN	CRM Level luffing crane	
56	JIANGSU HENGFA HEAVY MACHINERY	CHANGSHU JIANGSU	CRM Skin pass mill	

2. USA & MEXICO

No.	Manufacturer	Location	Item to be inspected	Remarks
1	Petro-Chem, Mexicana	Altamira, Mexico	Finned Heater	Resident Inspection
2	Integrated Industrial System	Yalesville, KT	ZRM	
3	Taylor Winfield	Youngstown, OH	Seam Welder	
4	Guild International Inc.	Bedford, OH	Seam Welder	

3. EUROPE

No.	Manufacturer	Location	Item to be inspected	Remarks
1	Munsch	Ransbach, Germany	Chemical Pump	
2	Danielli & C	Buttrio, Italy	Skin Pass Mill	Resident Inspection
3	Sundwig GmbH	Dusseldorf, Germany	Auto Flatness System	
4	ABB	Helsinki, Finland	AC Motors & Drive for ZRM	
5	DMS	Lille, France	ZRM SPM Winder	
6	Sundwig, GmbH	Dusseldorf, Germany	Auto Flatness System	
7	Alstom	Massy, France	Main ZRM Drive	
8	VEM, GmbH	Dresden, Germany	ZRM Main AC Motor	
9	Bird/Andritz	Koln, Germany	Centrifuge	Resident Inspection
10	Thomassen	Netherland	Compressor	Resident Inspection



Sendzimill (I2S, USA)



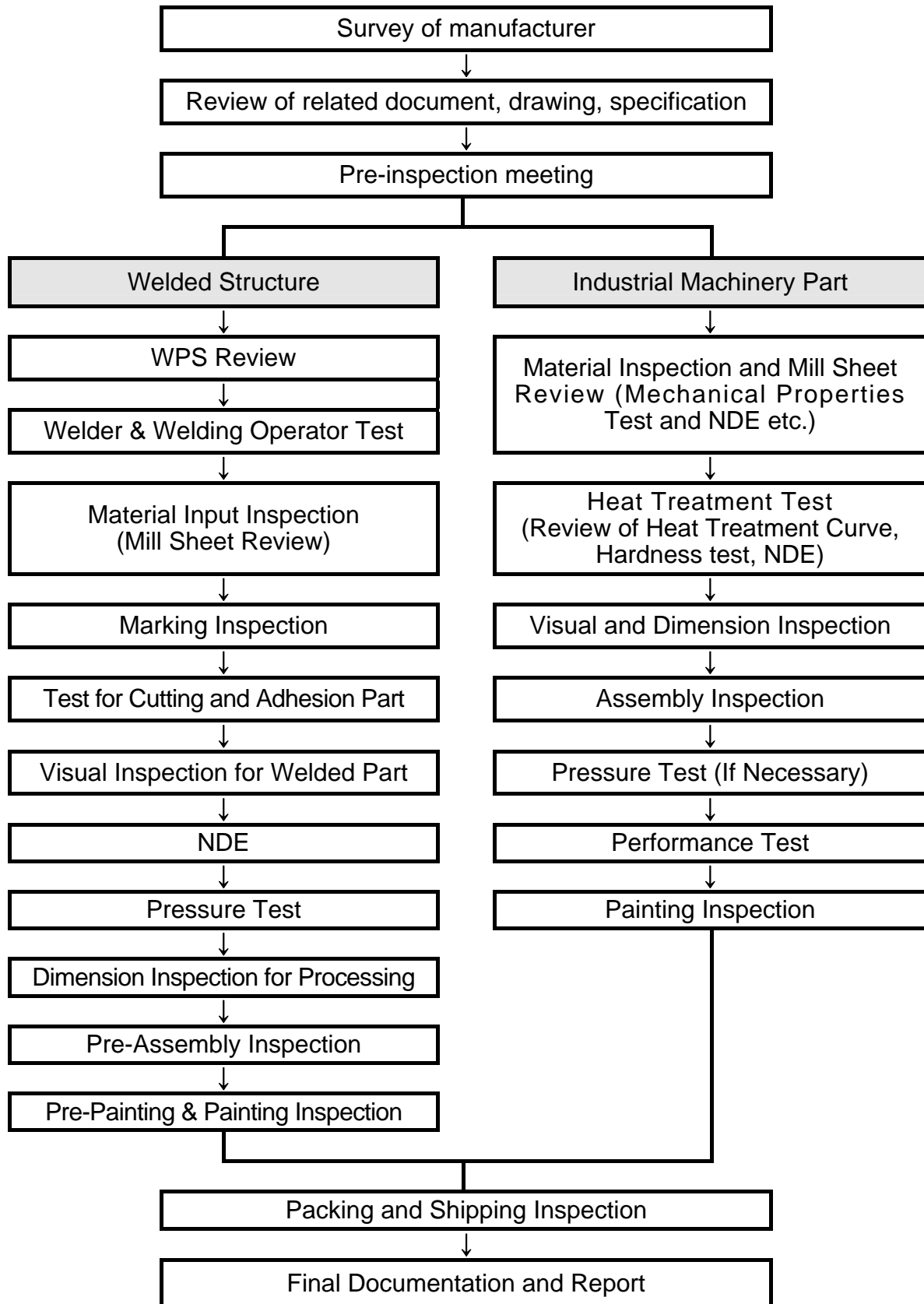
Seam Welder (Taylorwinfield, USA)

4. ASIAN COUNTRIES

No.	Manufacturer	Location	Item to be inspected	Remarks
1	UEDA	Fukuoka, Japan	Pinion Stand	
2	Supin	Kaoshiung, Taiwan	Electrolytic Pickling Tank Mixed Acid Tank	
3	Toshiba Machinery	Numazu, Japan	Roll Grinder	
4	WMS	Osaka, Japan	Rotary Shear Feed Leveller	
5	ABB Thailand	Puket, Thailand	10KV Compensator	
6	Newton, Magrisha Inc.	Dehli, India	Pressure Vessel Column	Resident Inspection
7	Taihei Seisakusho	Osaka, Japan	Side Trimmer	
8	Iran Oil Co.	South Pars, Iran	Pressure Vessel Heat Exchanger Piping Structure	Resident Inspection
9	EWDP	Abudabi, UAE	Piping	Resident Inspection
10	Azarab	Arak, Iran	Pressure Vessel Heat Exchanger	Resident Inspection
11	MSA	Arak, Iran	Reactor	Resident Inspection
12	Sugawara	Oita, Japan	Coiler drum Ass'y	
13	Mitsubishi-Hitachi Metals Machinery Co., Ltd.	Hiroshima, Japan	Roughing Mill Equipment	
14	SKK Ueda Gear , Ltd.	Sasayama, Japan	Worm Reducer	
15	Tanaka Denki Co., Ltd.	Hiroshima, Japan	Control Panel	

No.	Manufacturer	Location	Item to be inspected	Remarks
16	Kubota Corporation	Osaka, Japan	Drum	
17	Kobe Steel	Kobe, Japan	Heavy Reactor	Resident Inspection
18	MH(Mitsubishi Hitachi)	Horoshima, Japan	STS TCM Facility	
19	KPC	Kuwait	PE Coated Piping	Resident Inspection
20	Saudi-Kayan P.Carbonate	SaudiArabia	Stationary Equipment, Steel Structure	Resident Inspection
21	Danielli Far East	Rayon, Thailand	CCL Segment	Resident Inspection
22	Saudi-Kayan HDPE	SaudiArabia	Stationary Equipment, Steel Structure	Resident Inspection
23	SMP Project Oman Site	Oman	Site Erection Coordination & Supervising	Resident Inspection
24	LILAMA 45.1	VIETNAM	CRM PJT' PL TCM Roll coolant system	Resident Inspection
25	POS-LILAMA	VIETNAM	Waste Water Treatment System	Resident Inspection
26	LS-VINA	VIETNAM	6.6KV H.V Switchgear	
27	YOOLIMVINA / AKANG	VIETNAM	CRM Pickling circulation quipment	
28	J & V ENG / POS-LILAMA	VIETNAM	CRM CAL Furnace casing	Resident Inspection
29	OKSAN IMT / LICOGI-16	VIETNAM	CRM CAL Cooling chamber	
30	YOOLIMVINA	VIETNAM	CRM ARP Equipment	

VII. GENERAL WORK FLOW CHART OF PROJECT



VIII. Inspection/Test Equipment List

Equipment Name	Model/Size	Q'ty	Manufacturer	Remarks
Bearing Detector	0252451	1	Akashi (Japan)	Brg. Detecting
Oil Detector	SZJ-A,B	1	-	Oil Viscosity Detecting
Depth Gauge	631779	1	Mitutoyo (Japan)	Depth Measurement
Thickness Gauge	8K 10086	1	Mitutoyo (Japan)	Thickness Measurement
Ultrasonic Thickness Tester	UTM 20	1	Tokyo Meiki (Japan))	Ditto
Ultrasonic Thickness Tester	TM2S	1	Molded Pro. (U.S.A)	Ditto
Dial Gauge	7 HE 923	1	Mitutoyo (Japan)	Dimension Measurement
Gap Gauge		1	Mitutoyo (Japan)	Gap Measurement
Micro Meter	7080208	1	Mitutoyo (Japan)	Dimension Measurement
Gear Tooth Gauge	7171887	1	Mitutoyo (Japan)	Gear tooth pitch Measurement
Ocilloscope	70903893	1	LG Precision (Korea)	Electronic Wave Detecting
Noise Meter	X740671	1	Onsoku Elec. (Japan)	Nloise Measurement
RPM Meter	029474	1	Fuji Kogyo (Japan)	RPM Measurement
Multi-Tester	J 3101	1	Hwashin (Korea)	Volt and Ampere Measurement
Insulation Resistance Tester	925516	1	Dada (Korea)	Insulation Resis. Measurement
Earth Tester	95E11354	1	Hwashin (Korea)	Earth resistance Measurement
Current Tester	09-4719K	1	National (Japan)	Current Measurement
Multi Tester	6W26792	1	Sanwa Elec. (Japan)	Volt and Ampere Measurement
Camcorder	SV-H35	1	Samsung (Korea)	Recording

Equipment Name	Model/Size	Q'ty	Manufacturer	Remarks
Telescope	7.15 × 35 ZOOM	1	Samsung (Korea)	Viewing
Coating Thickness Tester	ELCO345F / MF-6394-290	1	Samsung (Korea)	Coating Thickness Measurement
Strain Tester	S238B	1	Tokyo Sokki Kenkyujo (Japan)	Detection for Strain of Machine or Structures
Camera		5	Samsung (Korea)	Photo Shooting
Moisture Detector	M-49 96091880	1	James Inst. (U.S.A)	Detection of Moisture in Oil
Corrosion Tester	MCM LC-4	1	MC Miller (U.S.A)	Corrosion Status Detection
Vibration Meter	AVT-CZ	1	Akashi (Japan)	Vibration Measurement
Concrete Crack Tester	PEAK 20X NA 0.06	1	Peak (Japan)	Concrete Crack Detection
MT Tester	YOKE	1	Kung-Do (Korea)	Magnetic Particle Examination
MT Tester	BLACK LIGHT	1	Kung-Do (Korea)	Ditto
Ultrasonic Strength Tester	CNS ELEC. 12176	1	Uniross (China)	Strength Measurement
Concrete Electric Resistance Tester	CNS ELEC. 960658900	1	Uniross (China)	Concrete Strength Test
Ultrasonic Tester	TYPE 3148	1	Krautkramer (Germany)	Ultrasonic Examination
Hardness Tester	α -750.RX	1	Kamekura (Japan)	Hardness Test
Salinity Detector	CL-3727	1	James Inst. (U.S.A)	Salinity Detection

Equipment Name	Model/Size	Q'ty	Manufacturer	Remarks
Air Flow Meter	P-6000	1	James Inst. (U.S.A)	Air Flow Rate Measurement
Hammer Drill	PNEUMATIC 2000N	1	AEG	Gathering Specimen
Laser Level Meter	9000, 9035-3229	1	Laser AL (U.S.A)	Level Measurement
Hardness Tester	PROCEQ. NO.8/137	1	Proceq Co. (U.S.A)	Hardness Test
Angular Rule	STANLEY METRIC 45-530	1	(U.S.A)	Angle Measurement
Radio Telephone	MOTOROLA	8	Motolora (U.S.A)	Communication
Inspection Hammer	-	3	(Korea)	Hammering Test
Welding Gauge	NWG-91	2	Fuji Tokyo (Japan)	Weld Size Insp.
Level Meter	STANLEY 42-465	1	Johnson (Korea)	Level Measurement
Tape Rule	NEO330, 50M	1	Komelin (Korea)	Dimension Measurement


Ultrasonic Tester

Vernier Calipers

IX. PERFORMANCE RECORD

1. Petrochemical & Oil Refinery Plant

Client	Project Name	Inspection Item	Manufacturer	Insp.Place	Period	Remark
HDO (Hyundai Oil Bank)	BTX	-Stationary Erection -Rotating -Electrical & Instrument -PMI	HDEC	Daesan	Jan. '97~ Feb. '98	
SK E&C	Ghana RFCC Project	- Boiler - Pressure Vessel - Heat Exchanger	Ilsung	Ulsan	Oct. '00~ May '01	
SECL (Samsung ENG)	Pemex Tula & Salamanca Oil Refinery, Mexico	- Pressure Vessel - Heat Exchanger - Column	J M C Sungjin	Cheonan Ulsan	Oct. '00~ Mar. '01	
		- Finned Heater	Petro-Chem	Mexico	Jan. '01~ Jul. '01	
SECL (Samsung ENG)	ABS Project, Iran	- Pressure Vessel	JMC	Cheonan	Sep. '00~ May '01	
SECL (Samsung ENG)	HPC M-Project	- Pressure Vessel - Heat Exchanger	JMC	Cheonan	Sep. '00~ May '01	
Tessag	HYCO & Utility Plant Phase2(Thailand)	- Reactor - Pressure Vessel Heat Exchanger	J M C	Cheonan	Feb. '01~ Jun. '01	
SECL (Samsung ENG)	NALCO Korea Yangsan Plant	- Blender - Heat Exchanger - Storage Tank	Daekyung Plant Service	Yeocheon	Apr. '01~ May '01	
LG E&C	LG-CALTEX Oil RFCC Revamping Project	- Pressure Vessel - Heat Exchanger	- Daekyung Machinery - Seoul Plant	-Yeocheon -Iksan	Feb. '01~ Apr. '02	
		- Valve	Pan Korea V/V	Changwon		

Client	Project Name	Inspection Item	Manufacturer	Insp.Place	Period	Remark
SECL (Samsung ENG)	Vietnam PVC Project	- Pressure Vessel - Heat Exchanger	JMC	Cheonan	May '01~ Sep. '01	
IRAN LAB	Iran AR4 Project	- Pressure Vessel - Heat Exchanger - Big Tower	HHI	Ulsan	May '01~ May '02	
LG MMA	YM-2 Project	- Pressure Vessel - Column	Doosan	Changwon	Jul. '01~ May '02	
LG E&C	LAB Revamping Project, Iran	- Pressure Vessel - Heat Exchanger - Tower	Sewon E&T	Changwon	Nov. '01~ Jun. '02	
LG- CALTEX	LG-CALTEX PX3 Project	- Heat Exchanger - Air Fin Cooler	Samyoung H/E Co.	Changwon	Nov. '01~ Jun. '02	
SGC	"R" Project	- New SRT VNF Cracking Heater	JNK/Kukdo	Ulsan	Apr. '02~ Jun. '02	
SECL (Samsung ENG)	SPC PDH/PP Project	- Large Heat Exchanger	Sewon Machinery	Changwon	May '02~ Oct. '02	
DAELIM	Caprolactam Expansion II Project	-Tower -Column -Heat Exchanger	Hantech	Ulsan	Sep.'02~ Nov. '03	
AGIP/ HDEC (Hyundai E&C)	South Pars Field Develop- ment Project (Phase 4 &5), Iran	- Pressure Vessel	Sungjin	Ulsan	Nov. '02~ Sep. '03	
		- Column - Heat Exchanger	Doosan Mecatec	Changwon	Oct. '02~ Jan. '04	
		- Steam Boiler	Kangwon Boiler	Balan	Oct. '02~ Nov. '03	
		- Air Fin Cooler	Samyoung H/E Co.	Changwon	Oct. '02~ May '04	
		- Column - Reactor - Pressure Vessel	Sewon E&T	Changwon	Oct. '02~ Nov. '03	
		- Storage Tank	SPECO	Eumsung	Feb. '02~ Oct. '03	

Client	Project Name	Inspection Item	Manufacturer	Insp.Place	Period	Remark
DAELIM	Panipat HCU, Mathura DHDT Project, India	- Pressure Vessel - Column - Tower - Heat Exchanger	Panipat,, India	Dehli	Nov. '03~ May '04	
HDO (Hyundai Oil Bank)	CFP	-Stationary Erection -Rotating -Electrical & Instrument -PMI	-HDEC	-Daesan	'03~'04	
SECL (Samsung ENG)	5 TH Gas Separation Project, Thailand	- Air Cooler - Tower - Valves	Samyoung H/E Doosan Mecatec Pan Korea V/V	Changwon	Oct. '03~ Feb.'04	
LG Chemical	Phenol/BPA Project	- Pressure Vessel - Heat Exchanger	TSM Tech.	Bucheon	Feb. '04~ Aug. '04	
DAELIM	EWDP Project, Kuwait	- Piping	GEI	Abudabi, UAE	Feb. '04~ Aug. '05	
Sakhalin Energy	Sakhalin II, Phase I Development Project, Russia	-Pipes	Sungil SIM SHI	-Haman -Keoje	Mar. '04~ Mar. '06	Long Term Project
SECL (Samsung ENG)	Songkhla GSP-1	- Amine Column	Doosan Mecatec	Changwon	Apr. '04~ Dec. '04	
GS E&C	Turpas Izmir Refinery DHP, Turkey	-Valve	Crane	China	Mar. '04~ Jun. '04	
SECL (Samsung ENG)	SPC X-Project	-Reactor -Heat Exchanger	Hantech	Ulsan	May '04~ Jul. '04	
HEC (Hyundai ENG)	Clean Fuel Project	-Reactor -Tower -Heat Exchanger -Pressure Vessel	Doosan Mecatec HHI KIC	Changwon Ulsan Ansan	May '04~ Apr. '05	
DAELIM	Kumho KPA-III Project	-Pressure Vessel -Heat Exchanger	A-Ha Plant	Incheon	Apr. '04~ Oct. '04	
DAELIM	KCCP Project	-HRSG	Shin-Ah Plant	Hanan, Korea	Apr. '04~ Jan. '05	

Client	Project Name	Inspection Item	Manufacturer	Insp.Place	Period	Remark
HEC (Hyundai ENG)	H-Project.	-Pressure Vessel -Column	Korea Plant	Masan, Korea	Aug. '04~ Feb. '05	
DAELIM	PPC EB Project, Iran	-Pressure Vessel	CHCE, DIC	Teheran, Iran	Jan. '05~ Dec. '05	
Fluor Daniel	Team II Project, China	-Pipe Fitting	Sungkwang Bend	Busan, Korea	Jan. '05~ Jan. '06	
SK E&C	SK Corp. NCR Project.	-API Pumps -Air Cooler -N2 Gas Compressors	Hyosung Ebara Korea H/E Kwangshin Mach.	Changwon Jeong Eup. Haman	Jan. '05~ Jun. '05	
Van Leeuwen Pipe & Tube	Alcan Gove G3 Expansion Pjt, Australia	-Pipe Fitting	Sungkwang Bend	Busan	Feb. '05~ Mar. '05	
SLSP	Atsu/Alasshanko u Crude Oil Pipe line Project, Kazachstan	-SSAW Pipe	Shengli Pipe Co., china	Jinan, China	Mar. '05~ Aug.'05	
DAELIM	YNCC-EB/SM Revamping Project.	-Tower -Reactor	Doosan Mecatec	Changwon	Apr. '05~ Oct.'05	
Kraus Union Armaturen Int'l	Team II Project, China	-Valves (Gate, Globe, Check & Butterfly Valve)	Sejin V/V	Busan	Apr. '05~ Dec.'05	
DAELIM	Team II Project, China	-Pressure Vessel -Heat Exchanger -Tower	DKME Ilsung	Ulsan	May '05~ Oct.'05	
STTS	Guangdong LNG JV Project.	-Gas & Air Cooler	Donghwa Emtec.	Busan	May '05~ Jul. '05	
Huntsman	Team II Project, China	-Pressure Vessel -Heat Exchanger -Tower	DKME	Ulsan	May '05~ Aug.'05	
DAELIM	SPGD Phase-1 Project.	-Pressure Vessel	DongYang Machinery	Ansan	Jun. '05~ Sep.'05	

Client	Project Name	Inspection Item	Manufacturer	Insp. Place	Period	Remark
GS E&C	South Pars #9,10 Project	Reactor Pressure Vessel Heat Exchanger	MSA Azar Ab	Iran	Aug. '05~ Sep. '06	
Shell	Adriatic LNG Project	LNG Storage Tank	HHI	Ulsan	Aug. '05~ Jul. '06.	
DAELIM	YNCC NCC/BTX Pjt.	Tower Heat Exchanger	Sewon E&T	Changwon	Sep. '05~ Jul. '06	
DAELIM	PB-1 Project	Pressure Vessel	A-Ha Plant	Incheon	Oct. '05~ Jan. '06	
GS E&C	Lidong Project	-Pressure Vessel -Piping	-Lidong, China	-China	Dec. '05~ Jul. '06	
Toray Saehan	KL-9 Project	Vacuum Dryer	Dong Young Ind. Co.	Gimhae	Feb. '06~ Aug. '06	
Chiyoda	QGX Project	Column Reactor Heat Exchanger	Doosan Mechatec	Changwon	Feb. '06~ Jan. '07	
Chiyoda	QGX Project	SSAW Pipe	HyoJung	Qatar	Mar. '06~ Dec. '06	
LG Chemical	NCC Revamping	-Tower/Column -Heat Exchanger	-Hanju Machinery -Daechang Ind.	-Gimpo -Yeosu	Apr. '06~ Sep. '06	
HEC (Hyundai ENG)	KCC S2 Project	-Tower/Column -Pressure Vessel -Heat Exchanger	-Taeyang Heavy - TSM -Taeyang Ind.	-HongSung -Gimcheon -Gimhae	May '06~ Sep. '06	
DAELIM	YEP-III Project	Pressure Vessel	A-Ha Plant	Incheon	May '06~ Oct. '06	
SK E&C	STC NCC Exp. Project	-Heat Exchanger	-Sewon E&T -Hantech	-Haman -Ulsan	Aug. '06~ Jul. '07	
SKC	Batch POP Plant Project	-Pressure Vessel	-SKC	Ulsan	Aug. '06~ Jun. '07	
GS E&C	GS Caltex HOU Project	-Column -Reactor -Pressure Vessel -Heat Exchanger -Electrical Equipment	GS E&C	Seoul	Aug. '06~ Jan. 07	Inspection Coordination
GS E&C	GS Caltex HOU Project	-Reactor -Column	-Kobe Steel -Seoul M/C Co.	-Japan -Siheung	Aug. '06~ Jan. '07	
KBR	Escravos Gas to Liquid Project	-Pressure Vessel -Column -Air Cooler	-SewonCellontec	Changwon	Sep. '06~ Jan. '07	

Client	Project Name	Inspection Item	Manufacturer	Insp. Place	Period	Remark
GS E&C	Egyptian LAB Project,	-Column -Heater/Boiler	-Daechang -Daekyung Technos	-Ulsan -Ulsan	Nov. '06~ Nov. '07	
DAELIM	Petro FCC Project	-Tower/Column -Heat Exchanger -Reactor -Boiler -Air Cooler	-Daechang -Ilsung -SewonCellontec -Doosan Mecatec -S&T	-Ulsan -Ulsan -Changwon -Changwon -Changwon	Nov.'06~ Oct. '07	
DAELIM	Sahara Project	-Column -Pressure Vessel -Heat Exchanger -Air Cooler	-Il Sung -Daechang -Wooyang -S&T	-Ulsan -Ulsan -Pyongtaek -Changwon	Nov. '06~ Feb. '07	
GS E&C	Qatar Laffan Project	-Pressure Vessel -Piping	-Qatar	-Qatar	Nov. '06~ Oct. '07	
GS E&C	Qatar Laffan Project	-Steel Structure	-Young Hwa Eng	-China	Nov. '06~ Oct. '07	
E-Tec	Solvay K2 Project	-Steel Structure	-Sang Woo	-Gimhae	Nov. '06~ Jan. '07	
DAELIM	SK Corp. New FCC Pjt	-Column -Pressure Vessel -Heat Exchanger -Air Cooler -API Pump	-SewonCellontec -A Ha M Tec -Il Sung -Daechang -S&T	-Changwon -Dangjin -Ulsan -Ulsan -Changwon	Jan. '07~ Mar. '08	
GS E&C	Sohar Aromatic Pjt	-Pressure Vessel	-Seoul Machinery Co.	-Shihwa	Apr.'07~ Apr. '08	
DAELIM	Ibn Zahr Project	-Column -Pressure Vessel -Heat Exchanger -Air Cooler	-Uyang -Il Sung -A-Ha M Tech -S&T	-Pyeong Taek -Ulsan -Dangjin -Changwon	Jun.'07~ Jul. '08	
SK E&C	L Project New FCC Project	-API Pump	-Hyosung Ebara	-Changwon	May. '07~ Dec. '07	
SKC	Batch POP Plant Project	-Site Erection -S/V & Inspection	-SKC	-Ulsan	Apr. '06~ Dec.'08	
LG Chemical	NCC Revamp Project	-Tower -H/Exchanger	-Hanjoo Mach. -Daechang Mach.	-Kimpo -Yeosu	Jun. '06~ Mar. '07	
Daewoo ENG	Sodiff S-2 Pjt. BPEX HDPE Pjt.	-P/Vessel -H/Exchanger	-Hankook Mach. -Wooyang Mach.	-Pyungtaek -Pyungtaek	May. '07~ Jan. '09	
MOODY	ESCRAVOS Gas to Liquids Project	-Tower -Column	-Sewon	-Changwon	Aug. '06~ Nov. '07	

Client	Project Name	Inspection Item	Manufacturer	Insp. Place	Period	Remark
Lotte Con.	Lotte Daesan Chemical Plant OS Project	-Site Erection Insp. -HP Piping	- Lotte Daesan Chemical Plant	-Daesan	Oct. '07~ Apr. '08	
SCT	Lotte Daesan Chemical Plant OS Project	-H/Exchanger -Pump	-Hanjoo -Youngpung	-Kimpo -Siwha	Oct. '07~ Jan. '08	
GS E&C	No.3 HOU Pjt.	-Site Erection Insp. -HP Piping	-GS HOU	-Yeosu	Jun. '08~ Jun. '09	
KCC Con.	KCC P2 Project	-H/Exchanger -Column -P/Vessel	-TSM Tech -Kunmin -KCC Field	-Ulsan -Seoul -Sesan	Jan. '09~ Sep. '09	
HEC (Hyundai ENG)	HDO #2 Project	-Heavy Reactor -Tall Tower	-HEC -Doosan Mecatec -HHI	-Seoul -Changwon -Ulsan	Jan. '09~ Sep. '10	
Daewoo ENG	WoongJin SP Project	-P/Vessel	-Ilsin Tech.	-Kimchun	Aug. '09~ Feb. 2010	
Hanwha Ningbo	Hanhwa Chemical CNP Project	-H/Exchanger	-JiangNan Boiler	-China	Aug. '09~ Jan. 2010	
GS E&C	GS E&C Plant Project	-H/Exchanger -Column -P/Vessel -Coordinating	-GS E&C etc.	-Seoul	Mar. '09~ Apr. '10	
DAELIM	Saudi Kayan Esfahan Refinery HDPE Pjt. Etc.	-H/Exchanger -Column -P/Vessel	-Aha M-Tech. -Wooyang HC -CFHI Etc.	-Dangjin -Pyungtaek -China etc.	Apr. '09~ Mar. '10	
HDO (Hyundai Oil Bank)	#2 HOU	-Stationary Erection -Rotating -Electrical & Instrument -PMI	-HDO Filed	-Daesan	Aug. '09~ Mar. '11	
GRM	Metal Recycling Plant	-Metal Recycling Equip.	-Head Office	-Danyang	Feb. '10~ Mar. '11	
DAELIM	ERUP NCP YNCC JER #2B Pjt. etc.	-Pressure Vessel -Heat Exchaner -Column -Drum -Reactor	-KPC Corp. -Shinwoo -KHE -etc.	-Korea	Apr. '10 ~ Mar. '11	
KCC	K2 Pjt.	-Oil Jacket	-TSM Tech	-Ulsan	Jun. '11~ Nov. '11	

Client	Project Name	Inspection Item	Manufacturer	Insp. Place	Period	Remark
DAELIM	JER #2B SK LDPE ACP JG Summit OSBL etc.	-Pressure Vessel -Heat Exchanger -Column -Drum -Reactor	-Cewon Cellon Tech -Aha M-Tech -Ilsung -Doosan E&C	-Korea	Apr. '11 ~ Mar. '12	
KCC	U1 Pjt.	-Storage Tank -Pipe	-Cheonan Factory	-Cheonan	Feb. '11~ Feb. '12	
GSE&C	Ruwais 4 th NGL RRE #2 SNDC Ph.1 Pjt. etc.	-Coordination -Air Cooled H/Ex -Incinerator -Pressure Vessel -Steel Structure	-Head Office -S&TC -Hanyang Ind. -Sungchang	-Korea	Jan. '11 ~ Dec. '11	
DAELIM	YERP #3,4 ACB BK MDI RMP-2 SADARA MFC etc.	-Pressure Vessel -Heat Exchanger -Column -Drum -Reactor	-PK Valve -Sungjin Geotec -Daechang -DBI -DKME	-Korea -UAE	Apr. '12 ~ Mar. '13	
GSE&C	Takreer Inter Refinery Pipe Line RRE #2 VGO FCC Pjt. etc.	-Coordination -Pressure Vessel -Column -Heat Exchanger -Steel Structure -Platform & Ladder	-Head Office -Hanmaek -Daebong -etc.	-Korea -UAE	Jan. '12 ~ Dec. '12	
GRM	TSL	-Top Hood Jacket -Cooling Duct -Chamber	-Iljin Energy	-Ulsan	Apr. '12	
KCC	JPP Pjt.	-P. Vessel -Column -Reboiler -Heat Exchanger -Coordination	-Head Office -Aha M-Tech etc.	-Seoul -Dangjin -Busan etc.	Sep. '12~ Mar. '13	
DAELIM	SADARA Isocyanates Butanol & Syngas Elastomers RABIGH II SM200 etc.	-Pressure Vessel -Heat Exchanger -Column -Drum -Reactor	-Hyosung -IPT -DKME -RAK -DBI	-Korea -UAE -China	Apr. '13 ~ Mar. '14	

Client	Project Name	Inspection Item	Manufacturer	Insp. Place	Period	Remark
GSE&C	RABIGH II Cilacap RFCC WPMP ERC Refinery UHV UGCC	-Coordination -Pressure Vessel -Column -Heat Exchanger -Steel Structure -Rotaing Equip.	-Head Office -PT. Murinda -PT. Korindo -HEISCO -IPEG -DKT -KHPT	-Korea -Indonesia -Kuwait	Jan. '13 ~ Dec. '13	
HEC (Hyundai ENG)	JPP OMGP	-Reactor -Pressure Vessel -Heat Exchanger -Boiler -Piping	-Head Office	-Seoul	Oct. '12 ~ Jun. '14	
HEC (Hyundai ENG)	HDO LBO-EPC TORE UGCC	-Centrifugal Pump	-DYCP	-Paju	Jul. '13 ~ Aug. '14	
GSE&C	RABIGH II Star Cilacap RFCC WPMP ERC Refinery UHV UGCC NSRP ARP	-Coordination -Pressure Vessel -Column -Heat Exchanger -Steel Structure -Rotaing Equip. -Anchor Bolt	-Head Office -PT. Murinda -PT. Korindo -HEISCO -Daejoo -DKT -KHPT	-Korea -Indonesia -Kuwait -Vietnam	Jan. '14 ~ Dec. '14	
DAELIM	Elastomers RABIGH II SM200 DB-2 O-Mon KOC Oman SRIP KNPC RFCC	-Pressure Vessel -Heat Exchaner -Column -Drum -Reactor	-Hyosung -IPT -DKME -RAK -ATB -Foster Wheeler	-Korea -UAE -Italy -China	Apr. '13 ~ Mar. '14	

Client	Project Name	Inspection Item	Manufacturer	Insp. Place	Period	Remark
SK E&C	- UHV - Esmeraldas Refinery - GE3 - Tufanbeyli TP - FCCL #2 - V-PJT OBL,IBL - NSRP - PDH	-Pressure Vessel -Ladder & Platform -CS SMLS Pipe -Flange -Bolt & Nut -Valve -Water Feed Pump -Forged Fittings -Wrought Fittings -MOV	- TWRE - TCC - JNK Heaters - KPC - Seowon	- Thailand - Korea	Sep. '13 ~ Aug. '14	
HEC (Hyundai ENG)	- TACE - GTPOGT - MX FEED - MX EPC - Nicaragua	- Ethane Cracker - Boiler - Steel Structure - Pressure Vessel - Heat Exchanger - Column - Tower - Substation - Centrifugal Pump	- DYCP - Sungho Metal - Kanglim CSP - Taekwang	- Korea	Nov. '14 ~ Oct. '15	
GSE&C	RABIGH II UO1 ARP ERC Refinery Ra/Sn Ph-III	-Coordination -Pressure Vessel -Column -Heat Exchanger -Steel Structure - Reactor - Tower	- Head Office - Prime - Hanmaek - Sewon - Doosan - Al Reyami	- Korea - UAE	Jan. '15 ~ Dec. '15	
DAELIM	Elastomers RABIGH II Oman SRIP UWEP Thai Binh II YNCC OCU Fast Track 3A	- Drum - Air Cooler - Reactor - Surface Condenser - Separator - Heat Exchanger - Piping - Steel Structure - Platform & Ladder	- Sewon - S&T Corp. - Doosan E&C - Wooyang HC - ATB - Hantech - Sedae Enerotech - Namin - DKME - Younghwa RAK	- Korea - Italy - UAE	Apr. '14 ~ Mar. '15	

Client	Project Name	Inspection Item	Manufacturer	Insp. Place	Period	Remark
SK E&C	- UHV - NSRP - NSRP-PPU - PDH - Wonjoo RDF - Hanam CHP - Jangmoon	- Drum - Air Cooler - Reactor - Heat Exchanger - Piping - Steel Structure - Platform & Ladder - Pipe & Fittings	- TWRE - TCC - Samjin Plantec - Kolon - DKME - Namsung	- Thailand - Korea	Sep. '14 ~ Aug. '15	
DAELIM	- Taean Thermal Power #9,10 - Oman SRIP - UWEP - Thai Binh II - YNCC C5 - TNB 3A - Pagbilao - S-Oil Super PKG	- Pressure Vessel - Reactor - Air Cooler - Heat Exchanger - Steel Structure - Platform & Ladder - Piping - Flare Stack - Deaerator	- ATB - Hantech - Sedae Enertech - Namin - DKME - Younghwa RAK - Zhuji Huashang - Takraf	- Korea - Italy - UAE - China	Apr. '15 ~ Mar. '16	
HEC (Hyundai ENG)	- TACE - MX EPC - KALSEL	- Ethane Cracker - Boiler - Steel Structure - Pressure Vessel - Heat Exchanger - Column - Tower - Substation	- Hantech - DKME - KDM Tech - Daekyung ENC - Site Insp.	- Korea - China	Nov. '15 ~ Oct. '16	
GS E&C	- ARP - Ra/Sn Ph-III - KNPC CFP - Pocheon CHP	-Coordination -Pressure Vessel -Heat Exchanger -Steel Structure	- Head Office - Prime - Hanmaek - DKME - Daejoo Heavy Ind.	- Korea	Jan. '16 ~ Dec. '16	
SK E&C	- PIEM - FHSE	- Steel Structure - Coal Boiler	- Doosan VINA - Sungchang	- Vietnam - Korea	Sep. '15 ~ Aug. '16	
SIEMENS	- Dangjin#4 - CCFP	- Steel Structure - Gas Turbine - Main Stack - Breech Duct	- J-Tech - Hanmaek - Samshin	- Dangjin - Hwasung - Gunsan	Oct. '15 ~ Mar. '16	

Client	Project Name	Inspection Item	Manufacturer	Insp. Place	Period	Remark
HDO (Hyundai Oil Bank)	- MX EPC	- Stationary	- Hantech - KDM tech - Daekyung E&C	- Ulsan	Aug. '15 ~ Nov. '16	
DAELIM	- Oman SRIP - S-Oil Super PKG - S-Oil RUC	- Pressure Vessel - Reactor - Air Cooler - Heat Exchanger - Steel Structure - Platform & Ladder - Piping	- Namin - Daekyung E&C - UBEC - Hantech - Iljin Energy - DKME	- Korea - KSA - UAE	Apr. '16 ~ Dec. '16	
SK E&C	- PIEM - KNPC CFP	- Pressure Vessel - Steel Structure	- Doosan VINA - PetroNASH	- Vietnam - UAE - Korea	Sep. '16 ~ Dec. '16	
HEC (Hyundai ENG)	- KALSEL	- Steel Structure - Pressure Vessel - Heat Exchanger - Column - Tower - Substation	- KHPT - Jeil ENS - ULP - S&TC - Dongyang FNC	- Korea - China	Nov. '16 ~ Dec. '16	
DAELIM	- Oman SRIP - S-Oil RUC	- Pressure Vessel - Reactor - Drum - Heat Exchanger - Steel Structure - Module - Ball Tank	- Namin - Daekyung E&C - UBEC - Hantech - Iljin Energy - DKME - GS Entec - ALPEC	- Korea	Jan. '17 ~ Present	
GSE&C	- KRP - Pocheon CHP - Anyang CCPP #2 - NWC	- GRP Vessel - Heat Exchanger - Steel Structure - Crane	- Hyundai ENG & Steel Ind. - Daejoo Heavy Ind. - Samjin Plantec - HEISCO	- Korea - Kuwait	Jan. '17 ~ Present	
SK E&C	- KNPC CFP - No.1 FCC - No.5 SBM	- Pressure Vessel - Steel Structure - Forged Steel Valve	- PetroNASH - Cheongam P&P - SWI Valve	- UAE - Korea	Jan. '17 ~ Present	

Client	Project Name	Inspection Item	Manufacturer	Insp. Place	Period	Remark
HEC (Hyundai ENG)	- KALSEL	<ul style="list-style-type: none"> - Steel Structure - Pressure Vessel - Heat Exchanger - Column - Tower - Substation 	<ul style="list-style-type: none"> - Hyosung - KEPP - S&TC - Hyundai WIA 	<ul style="list-style-type: none"> - Korea - China 	Jan. '17 ~ Present	



Stacking of H/Ex for SPC X-Project



H/Ex for HDO Revamping Project

2. POWER PLANT

Client	Project Name	Inspection Item	Manufacturer	Insp.Place	Period	Remark
Samsung Heavy Industries	Taeon Thermal Power Plant (#5, #6)	- Electrical Equipment - Lighting - Motor - Instrument - Elevator - Generator - Mold T/R - etc.	HHI Hyosung Etc.	Ulsan Changwon Etc.	'98~'02	
Alborg & Nem	HRSB Project	- Steam Drum	Ilsung	Ulsan	2000	
SK E&C	HRSB Project	- Steam Generator	Ilsung	Ulsan	2000	
POSCO	Pohang Combined Cycle Power Plant	- Fin Tube Panel Ass'y - Pipe Spool - HP & LP Steam Drum - etc.	Samsung Heavy Industries	Changwon	2000	
Hamon Deltak	HRSB Projects	- Fin Tube Panel Ass'y - Pipe Spool - HP & LP Steam Drum - etc.	Samyoung Heat Exchanger	Changwon	Nov. '00~ Feb. '03	
Incheon City	Incheon Incineration Plant	- Steam Drum & Tank - Water Wall Panel - Piping Assembly - Pump, Motor, Fan, Blower, Burner - Bulk Material	SHI	Bucheon	Mar. '00- Mar. '01	
KEPCO	Hadong Thermal Power Plant	- Power Plant Facilities (Regular Inspection)	Hadong Thermal Power Plant	Hadong	Mar. '00	
KEPCO	Boryeong Thermal Power Plant	- Power Plant Facilities (Regular Inspection)	Boryeong Thermal Power Plant	Boryeong	Oct. '00	
KEPCO	Dangjin Thermal Power Plant	- Power Plant Facilities (Regular Inspection)	Dangjin Thermal Power Plant	Dangjin	Nov. '00	
KEPCO	Samcheonpo Thermal Power Plant	- Power Plant Facilities (Regular Inspection)	Samcheonpo Thermal Power Plant	Samcheonpo	Dec. '00	

Client	Project Name	Inspection Item	Manufacturer	Insp.Place	Period	Remark
KEPCO	Samcheonpo Thermal Power Plant	- Power Plant Facilities (Regular Inspection)	Samcheonpo Thermal Power Plant	Samcheonpo	Feb. '01	
Deltak-USA	HRSG Project	- Steam Drum - Super Heater - Finned Tube - Piping Assembly	Samyoung H/E	Changwon	Oct. '01- Dec. '02	
IHI Japan	Bowline CCLT Project	- HRSG Boiler Package	SPECO	Eumsung	Sep. '01- May '02	
KOSPO	Hadong Thermal Power Plant	- Power Plant Facilities (Regular Inspection)	Hadong Thermal Power Plant	Hadong	Oct. '02	
KOMIPO	Boryeong Thermal Power Plant	- Power Plant Facilities (Regular Inspection)	Boryeong Thermal Power Plant	Boryeong	Oct. '02	
KOSEP	Samcheonpo Thermal Power Plant	- Power Plant Facilities (Regular Inspection)	Samcheonpo Thermal Power Plant	Samcheonpo	Dec. '02	
KOSEP	Samcheonpo Thermal Power Plant	- Power Plant Facilities (Regular Inspection)	Samcheonpo Thermal Power Plant	Samcheonpo	Jan. '03	
KOSEP	Korea South-East Power Plant	- Power Plant Facilities	Samsung Heavy Industries	Yeosu etc.	2003	
Hitachi Zoshen	AK Project	- HRSG Package	Daechang HRSG	Ulsan	May '03~ Sep.'03	
KEPCO	Dangjin Thermal Power Plant (#7, #8)	- Steel Structure for Boiler	Doosan Heavy Industries etc.	Changwon Etc.	2003	
KOSPO	Hadong Thermal Power Plant	- Power Plant Facilities (Regular Inspection)	Hadong Thermal Power Plant	Hadong	Mar. '04	
Boryeong Thermal Power Plant	Boryeong Thermal Power Plant	- Power Plant Facilities (Regular Inspection)	Boryeong Thermal Power Plant	Boryeong	Oct. '04	
KOSEP	Samcheonpo Thermal Power Plant	- Power Plant Facilities (Regular Inspection)	Samcheonpo Thermal Power Plant	Samcheonpo	Dec. '04	

Client	Project Name	Inspection Item	Manufacturer	Insp.Place	Period	Remark
DAELIM	Kwang Yang Combined HRSG Project	- Duct & Structure	Sung-II	Haman	May '04~ Apr. '05	
KOSEP	Korea South-East Power Plant (Samcheonpo)	- Power Plant Facilities	Doosan Heavy Industries	Samcheonpo	2006	
DAELIM	Kwangyang Combined Cycle Power Plant	- HRSG Module Ass'y	Sungjin Geotec	Ulsan	2006	
Samsung Heavy Industries	Geoje Power Plant	- Electrical Equipment - Lighting - Motor - Instrument - Elevator - Generator - Mold T/R - etc.	HHI Hyosung Etc.	Ulsan Changwon Etc.	2006 ~ 2010	
GASCO	ABU DHABI Project	- Divert Damper	Daeheung Machinery	Gimhae	Jul. '06	
KEPCO	Yeongheung Combined Heat & Power Plant	- Steam Condenser etc.	SPC	Jeongeup	Aug. '06~ Oct. '06	
KOMIPO	Boryeong Thermal Power Plant	- Power Plant Facilities (Regular Inspection)	Boryeong Thermal Power Plant	Boryeong	Sep. '06	
Daewoo E&C	JEBEL ALI Phase II Project	- Piping	Bangju	Haman	Dec. '06	
KOSEP	Yeongheung Thermal Power Plant	- Power Plant Facilities	Hyosung SPECO Plant	Yeongheung	2007	
KOSEP	Samcheonpo Thermal Power Plant	- Power Plant Facilities (Regular Inspection)	Samcheonpo Thermal Power Plant	Samcheonpo	Feb. '07	
KEPCO	Hwasung Thermal Power Plant	- Piping	Woongnam	Jindong	Feb. '07~ Mar. '07	

Client	Project Name	Inspection Item	Manufacturer	Insp.Place	Period	Remark
DAELIM	Saudi IBN Zahr PP-III Utility & Offside Project	* Package Boiler - Steam Drum - Water Drum - Economizer - Super Heater - Panel - Blow Down Tank - Blow Down Cooler - Fan - Silencer - Manual Valve - Safety Valve - Expansion Joint - Chemical Injection Unit - Pipe Spool & Support - Stack - Duct - Casing - Steel Structure - etc.	Seentec	Changwon	Mar. '07~ Oct. '07	
KOSPO	Hadong Thermal Power Plant	- Power Plant Facilities (Regular Inspection)	Hadong Thermal Power Plant	Hadong	Mar. '08	
Yerevan Thermal Power Plant	Yerevan CDDP Project	- Steel Structure	Sungchang Plant Construction	Suncheon	Sep. '08~ Mar. '09	
DAELIM	Hyundai Green Power Project	-LP/HP Boiler Feed Water Heater - Deaerator - Feed Water Tank	Sedae Eneritech Etc.	Gimhae Etc.	Sep. '08~ May '09	
HDEC (Hyundai E&C)	Rapo C IWPP Project	- Steel Structure - Valves - Pump - Package Items - Electrical - Instrument	HDSI, Hanmak P.Korea Youngpung Clean Care ABB Korea Emeerson Korea	Chunahn Whasung Inchun Kimpo Chunahn Sungnam	Sep. '08~ Nov. '14	
SGS	Ambatory Power Plant	- Power Plant Steel Structure	Kookjae Metal	Whasung	Oct. '08~ Jul. '10	

Client	Project Name	Inspection Item	Manufacturer	Insp.Place	Period	Remark
DAELIM	Hyundai Green Power Project	- Boiler Feed Water Pump - Circulation Water Pump - Surface Condenser - HRSG - Economizer, - Evaporator - Piping Material	HHI Hyosung Ebara BHI Kumwoo Kanglim CSP Etc.	Ulsan Changwon Gimhae Etc.	Nov. '08~ Sep. '09	
Doosan Heavy Industries	Nuclear Power Plant	- Power Plant Facilities	Sungdo Heavy Industry	Sungnam	2009	
Doosan Heavy Industries	NUON / Magnum Project	- Bellows	HKR	Pyeongtaek	Sep. '09	
Samcheonpo Thermal Power Plant	Samcheonpo Thermal Power Plant	- Power Plant Facilities	Hyundai-Samho Heavy Industries	Samcheonpo	2010	
DAELIM	Gwanggyo Combined Heat & Power Plant	- HRSG Stem Drum - etc.	Sedae Enertech	Gimhae Etc.	Jan. '10~ Dec. '10	
KOSPO	Hadong Thermal Power Plant	- Power Plant Facilities (Regular Inspection)	Hadong Thermal Power Plant	Hadong	Mar. '10	
HITACHI Zosen	AL-KHALIJ Power Plant (LIBYA)	- Duct - Bellows	HKR	Pyeongtaek	Mar. '10	
KEPCO	Tanjung Rriok Gas Fired Power Plant	- Air Dryer	SPX Flow Technology	Busan	Mar. '10	
KOSEP	Samcheonpo Thermal Power Plant	- Power Plant Facilities (Regular Inspection)	Samcheonpo Thermal Power Plant	Samcheonpo	Apr. '10	
Korea Western Power	Pyeongtaek Power Plant	- Power Plant Facilities (Regular Inspection)	Pyeongtaek Power Plant	Pyeongtaek	Sep. '10	

Client	Project Name	Inspection Item	Manufacturer	Insp.Place	Period	Remark
Korea East-West Power	Dangjin Thermal Power Plant	- Power Plant Facilities (Regular Inspection)	Dangjin Thermal Power Plant	Dangjin	Dec. '10	
KOMIPO	Incheon Thermal Power Plant	- Power Plant Facilities (Regular Inspection)	Incheon Thermal Power Plant	Incheon	Dec. '10	
KOSEP	Yeongheung Thermal Power Plant	- Power Plant Facilities	Yeongheung Thermal Power Plant	Yeongheung	Dec. '10	
Daelim	Gwanggyo Combined Heat & Power Plant	- Boiler Feed Water Pump - HRSG - Piping Material	Hyosung Sedae Enertech Kumwoo Etc.	Changwon Gimhae Etc.	Dec. '10~ Feb. '12	
KOMIPO	Boryeong Thermal Power Plant	- Power Plant Facilities (Regular Inspection)	Boryeong Thermal Power Plant	Boryeong	May '11	
HDEC	Ras Laffan C HARP Project	- HRSG	HSG Heavy Industry	Changwon	Jul. '11~ Sep. '11	
KOSPO	Hadong Thermal Power Plant	- Power Plant Facilities (Regular Inspection)	Hadong Thermal Power Plant	Hadong	Aug. '11	
HDEC	Ras Laffan Project	- HRSG	Doosan Heavy Industries	Changwon	Nov. '11~ Jan. '13	
KOSEP	Samcheonpo Thermal Power Plant	- Power Plant Facilities (Regular Inspection)	Samcheonpo Thermal Power Plant	Samcheonpo	Dec. '11	
KOSEP	Korea South-East Power Plant (Yeongheung)	- Power Plant Facilities	Samsung Heavy Industries	Yeongheung	2012	

Client	Project Name	Inspection Item	Manufacturer	Insp.Place	Period	Remark
Korea East-West Power	Dangjin Thermal Power Plant	- Steel Structure for Boiler	Daelim etc.	Dangjin Etc.	Feb. '12~ Mar. '12	
KOSPO	Hadong Thermal Power Plant	- Power Plant Facilities (Regular Inspection)	Hadong Thermal Power Plant	Hadong	Mar. '12	
Korea Western Power	Taeon Power Plant	- Power Plant Facilities (Regular Inspection)	Taeon Power Plant	Taeon	Mar. '12	
Korea Western Power	Taeon Power Plant	- Power Plant Facilities (Regular Inspection)	Taeon Power Plant	Taeon	Jun. '12	
GS E&C	Andong Natural Gas Power Plant	- Air Dryer - Pump, Motor - Electrical & Instrument - Air Compressor - Hoist - etc.	Hyosung etc.	Changwon etc.	Nov. '12 ~ Jul. '14	
Korea East-West Power	Dangjin Thermal Power Plant	- Power Plant Facilities (Regular Inspection)	Dangjin Thermal Power Plant	Dangjin	Dec. '12	
Korea Western Power	Korea Western Power Plant Precision Diagnosis	- Power Plant Facilities (Regular Inspection)	Taeon Power Plant	Taeon	Feb. '13~ May. '13	
KOSEP	Korea South-East Power Plant	- Power Plant Facilities (Regular Inspection)	Yeosu Power Plant	Yeosu	Oct. '13	

Client	Project Name	Inspection Item	Manufacturer	Insp.Place	Period	Remark
KOSEP	Samcheonpo Thermal Power Plant	- Power Plant Facilities (Regular Inspection)	Samcheonpo Thermal Power Plant	Samcheon-po	Dec. '13	
KOSEP	Yeongheung Thermal Power Plant	- Power Plant Facilities (Regular Inspection)	Yeongheung Thermal Power Plant	Yeongheung	Dec. '13	
Korea East-West Power	Dangjin Thermal Power Plant	- Power Plant Facilities (Regular Inspection)	Dangjin Thermal Power Plant	Dangjin	Dec. '13	
KOSEP	Yeongheung Thermal Power Plant	- Power Plant Facilities (Regular Inspection)	Yeongheung Thermal Power Plant	Yeongheung	Feb. '14	
KOSPO	Hadong Thermal Power Plant	- Power Plant Facilities (Regular Inspection)	Hadong Thermal Power Plant	Hadong	Mar. '14	
STX Heavy Industries	Bukpyung Thermal Power Plant #1,2	- Boiler - Turbine - Steel Structure - etc.	- Daeju Heavy Industry - Hanmaek - etc.	Dangjin Hwasung Etc.	Feb. '14 ~ Jul. '16	
POSCO	Yeosu Thermal Power Plant #1	- Column - Reactor - Tower - Steel Structure - Air Support Conveyor - etc.	- Dongbu Plant - Daesung ENG - Boyoung RTC - KPC - Hyosung - etc.	- Korea	Oct. '14 ~ Oct. '15	
SK E&C	Jangmoon Combined Cycle Power Plant	- Steel Structure - Pipe Rack - Coated Piping - etc.	- UBEC - Seah Steel - S&W - etc.	- Ulsan - Pohang - Busan - etc.	Oct. '14 ~ Jul. '15	
SHINBO	Hwasung Dongtan #2 T/L	- Steel Structure - etc.	- Samwoo Plant	- Korea	Jan. '17 ~ Present	
DH PHILS	500MW SP CFPP	- Steel Structure - etc.	- Samwoo Plant	- Korea	Feb. '17 ~ Jul. '17	



ILSAN Thermal Power Plant

3. IRON & STEEL MAKING PLANT

Client	Project Name	Inspection Item	Manufacturer	Insp.Place	Period	Remark
ZPSS (China)	No.2 Stainless Steel Cold Rolling Mill Project	- SendZimir Mill	I ² S	USA	Mar. '02~ Mar. '03	Lump Sum Price Contract
		- Skin Pass Mill	Danieli	Italy	Apr. '02~ Jan. '03	
		- AC Drive & Motor	ABB	Sweden	Feb. '02~ Feb. '03	
		- Auto Flatness System	Sundwig	Germany	Jul. '02~ Feb. '03	
		- WINDER	SEJAL	Japan	Jan. '02~ Mar. '03	
		- Transformer & High Voltage Switchgear	HHI	Korea	Jun. '02~ Nov. '03	
		- Seam Welder	Taylor Winfield	USA	Mar. '02~ Jan. '03	
		- Annealing & Cooling Furnace	EFCO	USA	Feb. '02~ Jan. '03	
		- Mixed Acid Tank	UVK	Germany	Jun. '02~ Jan. '03	
		- Chemical Pump	Munsch	Germany	Jul. '02~ Jan. '03	
		- Vector Motor	G.E	USA	Mar. '02~ Mar. '03	
		- Water Treatment Facility	Samkwang	Incheon	Feb. '02~ Dec. '02	
		- Air Dryer	Pneumatech	USA	Feb. '02~ Dec. '02	

Client	Project Name	Inspection Item	Manufacturer	Insp.Place	Period	Remark
ZPSS (China)	No.2 Stainless Steel Cold Rolling Mill Project	- Air Compressor	Atlas Copco	Belgium	Feb. '02~ Nov. '03	Lump Sum Price Contract
		- Roll Grinder	TM Machinery	Japan	Apr. '02~ Mar. '03	
		- Crane	Xin Xiang Crane	China	Mar. '02~ Feb. '03	
		- Generator	Hyosung	Korea	Jul. '02 ~ Dec. '03	
		- Pickling System - Electric Control Equip. - Coil Build-Up Line - CBL Welder - Tension Bridle Roll & Leveller - Payoff Reel & Belt Wrapper - Fume Exhaust System - Hydraulic Equipment - Coolant System	SOLTEC., Etc.	Korea	Feb. '02~ Feb '03	
POS-STEEL	POS-Qingdao Coil Center	-Shear Line -Slitter Line -Mini Shear Line -Mini Slitter Line	Daehwa Corea SPECO WMS	Korea Korea Korea Japan	Jun.'03~ Oct.'03	Lump Sum Price Contract
QPSS (China)	Stainless Steel Cold Rolling Mill Project	-ZRM,SPM -Furnace -Pickling Line -APL -CBL -TLL -Slitter Line -Power Station & Water Treatment Utility	ALSTHOM DMS UVK Guild TM Machinery Others	France France Germany USA Japan Korea	May '03~ May '04	Lump Sum Price Contract
ZPSS, (China)	ZPSS Expansion Project(3 Stage)	-Hot Strip Mill -Annealing & Pickling -Acid Recovery Plant	-SHMP -Hengyang Hengye -CITIC -Dalian Wantong -Mitsubishi-Hitachi	China China China China Japan	May '05~ Jul. '06	Lump Sum Price Contract
POS-FPC (China)	Foshan Coil Processing Center	-Rotary Shear Line -Mini Rotary Shear Line -Slitter Line	Daehwa Machinery Co., Ltd.	Daegu	May '05~ Aug. '05	Lump Sum Price Contract
POS-Tianjin (China)	Tianjin Coil Center	-Slitter Line -Mini Rotary Shear Line	Daehwa Machinery Co., Ltd.	Daegu	Jun '05~ Oct.'05	Lump Sum Price Contract
POSCO-IPPC#1 (India)	POSCO-IPPC Coil Center	-Slitter Line -Shear Line -Mini – Slitter Line	Daehwa Machinery Co., Ltd	Korea	Jan '06~ Oct. '06	Lump Sum Price Contract
POS-#2 FPC (China)	Foshan Coil Processing Center	- Rotary Shear Line - Mini Rotary Shear Line - Slitter Line	Daehwa Machinery Co., Ltd	Korea	May '07~ Aug. '07	Lump Sum Price Contract
POS-VHPC (Vietnam)	Vietnam Coil Processing Center	- Rotary Shear Line - Mini Rotary Shear Line - Slitter Line(2)	Daehwa Machinery Co., Ltd.	Korea	Jul. '07~ Dec. '07	Lump Sum Price Contract

Client	Project Name	Inspection Item	Manufacturer	Insp.Place	Period	Remark
POSCO IPPC No.2	POSCO-IPPC Coil Center	- Slitter Line	DONGBU Machinery Co., Ltd.	Korea	Apr. '08~ Oct. '08	Lump Sum Price Contract
POSCO JKPC	POSCO-JKPC Coil Center	- Slitter Line	Daehwa Machinery Co., Ltd.	Korea	May '08~ Feb. '09	Lump Sum Price Contract
POSCO- MKPC#2 (Malaysia)	POSCO-MKPC Co.	-Potary Shear Line -Slitter Line -Mini - Sliter Line	POSMEC	Korea	Oct. '08~ Jan '09	Lump Sum Price Contract
POSCO- JNPC#1	POSCO- JNPC Coil Center	- Slitter Line (2)	IDH	Korea	Aug. '08~ May '09	Lump Sum Price Contract
POSCO- JNPC#2	POSCO- JNPC Coil Center	- Slitter Line - Blanking Line	IDH	Korea	Dec. '08~ May '09	Lump Sum Price Contract
POSCO- Guangdong (China)	POSCO (Guangdong) Coated Steel	- ACL	POSCO-E&C	Korea Chian	May '05~ July '06	
SGS	Transnet Project	- Loader/Unloader	Hanyoung Ind.	Mokpo	Jul. '07~ Nov. '07	
LS Nikko	Copper Refining Project	- Copper Project Engineering & Inspection	LS NIKKO	Ulsan	Jun.'06~ May. '08	
GTV	Glass Plant Project	- Packing Facility	- Threefee - SJT	Whasung Chunahn	01.Dec.'07 ~31,Dec.'07	
Hyundai Steel	Sinter Plant Project	- Furnace etc.	- Samyang Heavy Ind. - Yeontae Ind. Com. - ROTEM	China China Dangjin	Jun.'08~ Oct.'09	

Client	Project Name	Inspection Item	Manufacturer	Insp.Place	Period	Remark
POSCO Vietnam	STS Cold Rolling Mill Project	- TCM - CAL, SPM - PL - RCL - CPL - ARP - Utility - Crane - LLC	- MH, BLHI - POS-Lilama - POSCOE&C - DTM - Dongband Plantech - Samjung P&A - EG Tech - Sanhai Crane - BHI	Japan China Vietnam Pohang Busan Daegu Kimhae China China	Mar.'08~ Apr. '09	
Dongbu Steel	Hot Rolling Mill Project	- CCL Facility - Hot Rolling Facility - Table Roll	- Danilli - CMMC - Roll Korea - Speco - Kyungin Machinery - Daewoo ENG	Tailand China Changwon Eumsung Siwha Inchun	May.08~ Apr. '09	
POSCO-JKPC	Coil Center	- Slitter Line	- Daewha Ind.	Kyungbuk	Aug. '08~ Jan. '09	
POSCO-JNPC	Coil Center, Blanking M/C	- 3-Slitter Line - Blanking Line	-IDH	Daegu	Oct. '08~ May. '09	
POSCO-MKPC	Coil Center	- Slitter Line - Rotary Shear - Mini Shear	- POSMEC - Korea M-Tech	Pohang Whasung	Aug. '08~ Mar. '09	
GRM	TSL-WHB Project	- Waste Heat - Boiler	- HaiLu Boiler	China	Oct. '09~ Apr. '10	
POSCO Kwangdong	ACL Project	- Furnace - Process Line	- POSCOW&C - PEZ	Pohang China	May '09~ Mar. '11	
ZPSS (China)	ZPSS Expansion Project(4 Stage)	-ZRM(2) -C-APL -SPM -H-APL -CPL -CBL -STL -Utility Facility Etc.	-DMS - POSCO E&C - Andritz Etc. - WISDRI Etc.	France Korea Austria Germany U.S.A	Dec.'09~ Mar. '11	

Client	Project Name	Inspection Item	Manufacturer	Insp.Place	Period	Remark
POSCO CDPPC	Dalian Plate Processing Center	- Shearing Line - Crane - Pre-treatment facilities - PLASMA CNC	- STX Construction - Taiguan Cranes - TCM - Youngjin S&P - Jinsung C&I - Taeyoung Co. - Hanjin Co. - J. S. T - Seoul Engineering - Mungjin Tech.	China Korea	Jun. '10~ Apr. '11	
POSCO CTPC	Tianjin Processing Center	- Slitter Line - Rotary Shear Line - Mini Shear Line	- Daehwa Industrial - Daemyung Industry - BS ENG. - Daewha reduction - Kyungsan High Tech. - Korea MNC - Kwangwon Electric - Chungsong Electric	Korea	Jul. '10~ Feb. '11	
POSCO CYPC	Yantai Automotive Processing Center	- Slitter Line - Rotary Shear Line - Mini Rotary Shear Line - Blanking Line	- Daewha Industrial - Cysco - GNC Heavy industry - Dongyang Steel - Daewha reduction - Hwasung Industry	Korea	Jul. '10~ Feb. '11	
Hyundai Hysco- (Dangjin)	Hyundai Hysco (Dangjin) No.2 CGL Project	- 2CGL(MSW) - 2CGL - 3RCL - 5 CPL - Distribution & HBS - Furnace & C. Tower - Galvanizing Pot - SPM & TL	- SFA - IDH - KSI - HTM - Now E&C - Leebe Industry - HHI	Changwon Daegu Daegu Changwon Ansan Junnam Ulsan	Dec.'10~ Jul. '11	
ZPSS	Coil Center	- H-CTL - CTL/M-CTL - STL - Transfer Car - Crane - Girding Machine etc.	-Daehwa Reduction -ShangQi	Korea China	Dec. '10~ Jyl. '11	

Client	Project Name	Inspection Item	Manufacturer	Insp.Place	Period	Remark
ZPSS	CRANE	-Steel Marking Plant Crane -Hot Rolling Plant Crane	- ShangQi	China	Dec. '10~ Mar. '11	
ZPSS	EAF	-Electric Arc Furnace -Dusting System -Consteel -WTP(Water Treatment Plant) -Electril Equipment	-HuaTian etc.	China	Dec. '10~ Feb. '11	
Hyundai Hysco- (Sunchun)	Hyundai Hysco (Sunchun) No.2 CGL Project	- 2 CGL(MSW) - 2RCL(MSW) - Furnace & C. Tower - SPM & TL - Galvanizing Pot - 2 CGL - Crane	- KSI - SFA - Now E&C - HHI - Leebe Industry - IDH - Younggan Ind.	Daegu Changwon Ansan Ulsan Junnam Daegu Changwon	Mar.11~ Jan. '12	
POSCO- VST	Vietnam New Stainless Steel Cold Rolling Mill	- SPM - TLL - APL - ZRM - CBL - STL	- POSCO E&C - IDH	Kyungbuk	Apr. '11~ Jan. '12	
POSCO Plantec	POSCO Plantec New Port Factory Facilities Project	- Steel Structure - Low Pressure Distributor - Transformer - High Pressure Hydroelectricity - Crane - Air Compressor	- Seohee Construction - SYSCON - Yoosung Elec. - Minjoo Relay - Daeyang SP - Bando Hoist - Yujin Industrial	Kyungki Pohang Daegu Chunan Pohang Seoul Mokpo Ahnsan	Feb. '11~ Jun. '11	
POSCO PLANTEC	POSCO Gangneung MG Smelt	-Magnesium Smelt System	-E-Jen Tech etc.	Korea Pohang Etc.	Mar. '11~ Nov. '11	

Client	Project Name	Inspection Item	Manufacturer	Insp.Place	Period	Remark
POSCO PLANTEC	POSCO Pohang STS 2,3 Steel Making	-Dusting System	-DongDu Engineering -ShinIl Engineering -G&Tech -Bangju -Seil Machine -Shinwoo Industry -P.D. Tech	Korea	Mar. '11~ Nov. '11	
POSCO PLANTEC	POSCO Pohang S.Reclaimer	- Reclaimer 604	-Hyosung etc. -G&C Heavy Industry -TaeWha Erema -Taeyoung Industry Machine -Nara Coporation -Sewha Machine	Korea	Mar. '11~ Jun. '12	
POSCO PLANTEC	POSCO Gwangyang MaterialsWharf #8,9 CSU Project	- Silo belt Conveyor	- Donghae Mech. - Sungjin Geotec - Honglk Industry	Pohang Ulsan Kimhae	May '11~ Jan. '12	
POSCO PLANTEC	POSCO Gwangyang Silo In & Out Belt Conveyor Project	- SILO Belt Conveyor	- Bosung Heavy Ind. - Sooyeon Heavy Ind. - DDaegil Industrial - BS ENG.	Youngchun Junnam Pohang Changwon	May '11~ Feb. '12	
POSCO PLANTEC	POSCO Pohang 1 Cokes Reclaimer Project	- Reclaimer 204 - Stacker	- Dongheon Industries - Jewoo Industries - Mansung Industries - SMH	Busan Pohang Pohang Changwon	Jun. '11~ Nov. '11	
HYUN -DAI STEEL	3 rd Steel Mill Facilities	-Cokes, Refractory -Sintering Plant -Blast Furnace -Steel Making Plant -continous casting Plant -Thick Plate Mill	-Hyundai ROTEM etc. -Namkyungsungrak etc.	Korea China	Aug. '11~ Apr. '13	

Client	Project Name	Inspection Item	Manufacturer	Insp.Place	Period	Remark
KRAKAT -AU POSCO	POSCO Indonesia Integrated Steel Mill	-Blast Furnace (Furnace Top Equip Shell, Drive Unit etc) -Cokes & Refractory -Steel Making Plant -Sinter Plant	- POSCO E&C - PT.KE - PWIT - etc.	Korea China Europe Indonesia	Sep. '11~ Aug. '13	
HYUN -DAI HYSCO	#2 Cold Rolling Mill	-PL -TCM -CVGL -CGL -RCL/CPL -Packing facilities -Transfer facilities -High-rise storage -Crane -Acid Regeneration facilities -Cooling tower -Desulfurization facilities etc.	-Hyundai ROTEM etc.	Korea	Mar. '12~ Mar. '13	
POSCO SS -VINA	New Minimill Facilities	-Steel Making Plant -Continuous Casting Machine -Section Mill -Rebar Mill -Substation	-Danieli/DFE -Danieli/DCS -Danieli/D&C -etc.	Thailand China Italy Europe etc.	Oct. '12 ~ Dec. '13	
POSCO PLANTEC	Gwangyang 4 th Hot Strip Mill	-FM Mill Ass'y	-Woorim Machinery -Korean Industrial Machinery -etc.	Korea	Aug. '12 ~ Mar. '13	
POSCO PLANTEC	Gwangyang R-Yard Stacker & Reclaimer	-Stacjer & Reclaimer #115,515	-Sehwa Machinery -Daehan Engineering -etc.	Korea	Sep. '12 ~ Mar. '13	
POSCO PLANTEC	Gwangyang CSU #6	- CSU #6	-STX Heavy Industry -SDA -Nara Corp. -Nakwoo Tech -etc.	Korea China	May '12 ~ Nov. '13	

Client	Project Name	Inspection Item	Manufacturer	Insp.Place	Period	Remark
POSCO PLANTEC	Brazil CSP	-Blast Furnace -Cokes Stacker & Reclaimer - Flux & Alloy Feeding System -Waste Gas Cleaning & Holds -Steel Plant -Steel Making Plant (Converter Vessel) -etc.	-SDA -Daedong -Donghwa E&I -Jinsung C&I -Daekwang -Daewoong CT -Sungjin Geotec -etc.	China Korea	Oct. '12 ~ Jul. '14	
POSCO	IJPC	- Slitter Line - Oscillating Shear Line - Mini Rotary Shear Line	- Daehwa Industrial Machinery - Daehwa Reduction Gear - etc.	Korea	Feb. '13 ~ Jun. '13	
POSCO PLANTEC	SNNC Gwangyang Port Belt Conveyor	Belt Conveyor	-Dalsung -Manbo Heavy Industry -Cheongha Heavy Industry -etc.	Korea	May '13 ~ May '14	
POSCO PLANTEC	SNNC Gwangyang Port Stacker & Reclaimer	- Stacker & Reclaimer	-SDA -DLLK -Yuehui -Lvshun -etc.	China	Oct. '13 ~ May '14	
POSCO	CYPC 600Ton Progressive	- 600Ton Progressive Press Line	- IDH - Dongshin Press	Korea	Dec. '13 ~ Jan. '14	
POSCO PLANTEC	SNNC Gwangyang Port #1404,1405 Belt Conveyor	-Belt Conveyor	-Sungduk Industry -Taeyoung Industrial Machinery -etc.	Korea	Feb. '14 ~ May '14	
POSCO	CWPC	- 800Ton Press & Blanking Line - Slitter Line	- IDH - BS ENG - Taekwang Machinery - etc.	Korea	Sep. '14 ~ Nov. '14	

Client	Project Name	Inspection Item	Manufacturer	Insp.Place	Period	Remark
POSCO	CFPC	- Slitter Line - etc.	- Daehwa Industrial Machinery - CYSCO - etc.	- Korea	Nov. '14 ~ Mar. '15	
POSCO Plantec	Pohang #2 Blast Furnace & Steel Making	-Blast Furnace (Shell etc.) -Steel Making (Converter Vessel etc.)	-POSCO Plantec -Sungjin Geotec	-Ulsan -Pohang	Oct. '14 ~ Apr. '15	
POSCO	Brazil CSP	-Blast Furnace -Cokes -Steel Making -Sinter Plant -Site Insp. in Brazil	-QINYE -Dongyang Cast Iron -YPEC -Samwoo ECO -Hwasung -HANSCO -Ooksan IMT -Donghwa E&I -Power Dragon -Hyundai Mepol -etc.	-Korea -China -Brazil	Apr. '14 ~ Apr. '16	
TENARIS	Baycity Crane	- Gantry Crane - Over Head Crane	- KG Crane - Woorim Machinery - Hwasung ENG - Dongwoo Machinery - etc.	- Korea	Sep. '14 ~ Oct. '15	
POSCO Plantec	Gwangyang #5 Blast Furnace (Raw Material Conveyance)	-Stacker&Reclaimer -Belt Conveyor -Drive Unit etc.	-Dangsung -Gaius Industrial System -Dongkwang ENG etc.	-Korea	May '15 ~ Feb. '16	

Client	Project Name	Inspection Item	Manufacturer	Insp.Place	Period	Remark
POSCO Plantec	Pohang 3 rd Blast Furnace (3 rd Revamping)	- Air Receiver Tank - Compressor - Impeller - Steel Structure - etc.	- AERIX - KC Cottrell - Gyangshin Machinery - etc.	-Korea	Aug. '15 ~ Apr. '17	
POSCO	Gwangyang 2 nd Steel Making #1,2 RH/LF Ladle Transfer Car	-Ladle Transfer Car	-Pan Korea -Samwoo ECO -Unex -FTE etc.	-Korea	Oct. '15 ~ Jun. '16	
POSCO Plantec	Pohang Raw Material Yard Stacker & Reclaimer	-Stacker & Reclaimer	-DS Heavy Ind. -Sungil Hitech -Daedong etc.	-Korea	Oct. '15 ~ Apr. '17	
POSCO	Gwangyang 2 nd Sinter Plant	-Boiler Proper -Steam Drum -Deaerator -Piping -Cooling Tower etc.	-BHI -Samshin etc.	-Korea	Oct. '15 ~ Mar. '16	
POSCO	Pohang 1 st CRM STS CBL	-Strip Handling Equip. -Lead Strip Sheet Transfer Car with Pallet -Vacuum Hoist etc.	-Taechang Machinery -Seoul ENG etc.	-Korea	Oct. '15 ~ Dec. '15	
POSCO	Pohang Electrical Steel Plate #3 APL #2 ACL #3 ZRM	-APL -ACL -ZRM Mill etc.	-Unex etc.	-Korea	Nov. '15 ~ Nov. '16	

Client	Project Name	Inspection Item	Manufacturer	Insp.Place	Period	Remark
POSCO	Pohang 2 nd Thick Plate PICO-III Main Body	-Motor Base Frame -Gear Coupling -Bottom Header -Pinion & Gear -Piping Support -Case etc.	-Dongbang Plantec etc.	-Korea	Nov. '15 ~ Apr. '16	
POSCO	Gwangyang 1 st Steel Making #1 Converter	-Converter Vessel -Trunnion Ring etc.	-BHI etc.	-Korea	Jan. '16 ~ Dec. '16	
POSCO	Pohang 3 rd Blast Furnace (3 rd Revamping) - TLC	-Side Trimmer -Side Chopper -EIC -Transfer Car etc.	-POSCO ICT -Seoul ENG etc.	-Korea	Jan. '16 ~ Nov. '16	
POSCO	Pohang 3 rd , 4 th Blast Furnace Blower #1,2,3 M/B	- Blower - Control Oil Cooler - Lube Oil Pump - etc.	- MDT - SPICO - etc.	- Switzer -land - Korea	Feb. '16 ~ Apr. '17	
POSCO	Pohang 2 nd Steel Making #3 Converter	-Converter Vessel -Trunnion Ring etc.	-BHI etc.	-Korea	Mar. '16 ~ Apr. '17	
POSCO Plantec	Pohang FINEX#3	- Main Structure - Column - Girder, Handrail - Control Panel - etc.	- Donghwa E&I - Dooyang EMI - MS - etc.	-Korea	May '16 ~ Nov. '16	

Client	Project Name	Inspection Item	Manufacturer	Insp.Place	Period	Remark
POSCO	Gwangyang 1 st CCL	-Crane -Handling Device -EIC -Water Treatment -etc.	-Daeyang Heavy Ind -Daedong Heavy Ind -Shingwang etc.	-Korea	May '16 ~ Nov. '16	
POSCO	Pos LX CO Lithium	-Reactor, Tank -Heat Exchanger -Agitator -Separator -Steel Structure -etc.	-POSCO ENG -Hantech etc.	-Korea	May '16 ~ Jan. '17	
POSCO	Pohang 3 rd Sinter Plant	-Mixer -Electrical Equip. -Dedusting Equip. -etc.		- Korea	Jun. '16 ~ Mar. '17	
POSCO Terminal	Gwangyang CTS Silo	- Receive Tank - Column - Hopper - etc.	- POSCO ICT - POSCO ENC - PAN Korea - etc.	-Korea	Aug. '16 ~ Present	
POSCO	Gwangyang Steel Making#1 No.2 Hot Metal Charging Crane	- Cabin Ass'y - Main Girder - Hook Ass'y - etc.	- Hyosung	-Korea	Aug. '16 ~ Mar. '17	
POSCO	Pohang Steel Making#2 No.1 Ladle Teeming Crane	- Main Trolley Ass'y - Ladle Hook - Ladle Beam - etc.	- Hyosung	- Korea	Aug. '16 ~ Apr. '17	
Dongkuk Steel Mill	Main Reducer	- Reducer - etc.	- Choyang Precision	-Korea	Oct. '16 ~ Present	
POSCO Plantec	Gwangyang CSU#10	- Steel Structure - Reducer - Casing - Electrical Panel - etc.	- DS Heavy Ind. - Gumyang E&C - etc.	-Korea	Oct. '16 ~ Jun. '17	
POSCO	Gwangyang Hot Rolling Mill #3	- FM Looper Lub. Sys. - ECS (Evaporator Cooling Sys.) - Motor & Drive - T/R etc.	- POSCO ICT - Dongbang Plantec - Dongjin E&C - TMEIC - etc.	- Korea - Finland - etc.	Oct. '16 ~ Present	

Client	Project Name	Inspection Item	Manufacturer	Insp.Place	Period	Remark
POSCO	Pohang Steel Making #3 Main Transformer	- Main Transformer - Radiator - Tank & Cover - etc.	- Hyosung - Yeonam Tech - etc.	- Korea	Oct. '16 ~ Nov. '16	
POSCO	Pohang Pos MC R&D	- Tundish Cover - Wire Drum - Main Girder Box - Cabin - etc.	- POSCO E&C - Daeyang Heavy Industries - Woorim Machinery - etc.	- Korea	Oct. '16 ~ Present	
POSCO	Pohang Hot Rolling Mill #1	- ECS (Evaporator Cooling Sys.) - Main Reducer - Skid Button - Sump Pump - Radiator - etc.	- POSCO ENC - POSCO ICT - ABB - etc.	- Korea	Nov. '16 ~ Jun. '17	
POSCO	Gwangyang Iron Making #3 No.1 Blower HP Panel	- 11kv SWGR - etc.	- Daidong Industrial Electricity	- Korea	Jan. '17 ~ Jan. '17	
POSCO	Pohang CCL #3 No.1 Teeming Ladle Crane	- Drive Wheel - Trolley Frame - Sheave Ass'y - Gear Box Ass'y - Wire Drum - Main Trolley Ass'y - etc.	- Hyundai Rotem - Hyosung - Nara Corp. - etc.	- Korea	Jan. '17 ~ Apr. '17	

Client	Project Name	Inspection Item	Manufacturer	Insp.Place	Period	Remark
POSCO	Gwangyang Steel Making #1 Converter #3	- Converter Vessel - Trunnion Ring etc.	-BHI -Woorim Machinery -etc.	-Korea	Apr. '17 ~ Present	
POSCO	Pohang 154Kv Switching Station	- 145Kv GIS - Tank & Tank Cover - T/R - Battery Charger etc.	-POSCO ICT -Hyosung -etc.	-Korea	Feb. '17 ~ Present	



ZPSS Stainless Strip Hot Strip Mill Line



ZPSS Stainless Steel Cold Rolling Mill Line



Brazil CSP Blast Furnace (POSCO)



Brazil CSP Raw Material Yard (POSCO)



Brazil CSP Sinter Plant (POSCO)

4. PORT FACILITIES

User/Client	No. of Unit	Manufacturer	Built Year	Type of Crane
Binturu Port / Malaysia	4	Samsung Heavy Ind.	2000	40.6Ton RMQC
Seband Corp. / Gamman Port, Busan	1	Samsung Heavy Ind.	2000-2001	40.6Ton RTGC
ROK Navy / Jinhae Port	2	Samsung Heavy Ind.	2001	G/C 60Ton × 90m
US Navy / Puget sound Port	1	Samsung Heavy Ind.	2001	Portal Jib Crane 60Ton × 33.5mR
US Navy / Norfolk Port	1	Samsung Heavy Ind.	2001	Portal Jib Crane 60Ton × 33.5mR
HSD	19	- Samjung Corp. - WIA Ltd.	2001	G/C 225Ton × 37m etc.
South Asia Gateway Terminal / Sri Lanka	9	Doosan Heavy Ind.	2001	40.6Ton RTGC
Korea Zinc Co., Ltd.	1	-Korea Heavy Equipment Co.	2001	Belt Conveyor
Korea Zinc Co., Ltd.	1	-Hyundai Heavy Ind.	2001	420T/H LLC
Jakarta International Container Port/ Indonesia	3	-Doosan Heavy Ind. Lampung Factory	2002~2003	40.6 Ton RMQC
Washima Shipyard/ Japan	8	-Daewoo Shipbuilding	2003~2004	68 Ton Hoisting Capacity
Jakarta International Container Port/ Indonesia	3	-Doosan Heavy Ind. Lampung Factory	2003~2004	40.6 Ton RMQC

User/Client	No. of Unit	Manufacturer	Built Year	Type of Crane
ICT (PSA)	6	ZPMC, China	2003	40.6 Ton RMQC
Hanjin	12	Kang-San Industry	2003	40.6 Ton RMQC Leg Extension
KEPCO	1	Samsung Heavy Ind.	2003	Ship Loader
KEPCO	1	PWH	2003	200T/H CSU
Samsung Heavy Ind.	1	CTC	2003~2004	30 Ton LLC
Sun-Kwang	2	Doosan Heavy Ind.	2003~2004	40.6 Ton RMQC
Sun-Kwang	3	Hyundai Heavy Ind.	2004~2005	40.6 Ton RMGC
Busan New Port	18	ZPMC, China	2004 ~2006	RMQC (STS)
Hanjin Shipping Line	3	ZPMC, China	2004 ~2005	40.6 Ton RMQC
Hanjin Shipping Line	4	ZPMC, China	2004~2005	40.6 Ton RTGC
Hutcheson Korea	12	Busan No. 5 Port	2005	Structural Analysis for RTGC
Hanjin Heavy Industries	2	Busan Factory	2005	Safety Analysis for two LLC
Hutcheson Korea	4	Busan No. 5 Port	2005	Safety Analysis for RMQC
Hyundai Shipping Line	3	Kaoshiung Port	2005	Structural Analysis for RTGC
Hucheson Korea	3	Busan No.5 Port	2005	Spreader
Volvo Korea	10	Volvo Korea	2005	Safety Analysis for 10 OH Cranes
Hucheson Korea	3	Busan No.5 Port	2005	Spreader

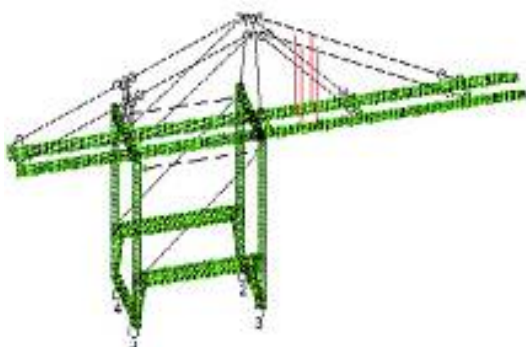
User/Client	No. of Unit	Manufacturer	Built Year	Type of Crane
Korea Specialty Automobile Co.	5	Korea Specialty Automobile Co.	2005	Structure Analysis for Trailers
Myung Shin Ind. Co.	3	Myung Shin Ind. Co	2005	Design service for RMGC
Daewoo Shipbuilding	1	Geoje Yard	2006	Structure Analysis for 30 Ton BTC
Samsung Heavy Ind. Co.	1	Geoje Yard	2006	Critical Point Structure Analysis
Hucheson Korea	8	Busan Port	2006	Structure Analysis for RMQC
Busan New Port Corp.	36	Busan New Port (1,2 stage)	2006	Equipments Consulting Service
Hyundai Shipping Lines	48	Busan New Port (2-2 stage)	2006	Equipments Consulting Service
Hanjin Shipping Lines	48	Busan New Port (2-1 stage)	2006	Equipments Consulting Service
Hanjin Heavy Ind.Co.	2	Suvic, Phillipine	2006	Goliath Crane 2 Sets
Hanjin Shipping Co.,	54	ZPMC, China	2007	STS 12 Sets RMGC 42 Sets
Hyundai Merchant Marine Co., Ltd.	47	ZPMC, China	2007	STS 11 Sets RMGC 36 Sets
Samsung Heavy Industries Co., Ltd	1	SHI Geoje Yard	2007	250Ton LLC
Pusan New Port Co.	38	ZPMC, China	2007	STS 7 Sets RMGC 31 Sets
Washington United Terminals, Inc.	3	WUT, USA	2007	STS 3 Sets
Pohang Young-II New Port Co., Ltd.	7	Pohang Young-II New Port Co., Ltd.	2007	STS 2 Sets RTGC 5 Sets

User/Client	No. of Unit	Manufacturer	Built Year	Type of Crane
Pusan Newport Co., Ltd.	38	ZPMC, China	2009	RMG 31 Sets STS 7 Sets
TTI-Algeciras	46	ZPMC, China	2009	RMG 38 Sets STS 8 Sets
Ulsan / Pyungtaek I-Port Co., Ltd.	15	ZPMC, China	2009	RTG 11 Sets STS 4 Sets
Washington United Terminal	2	ZPMC, China	2009	STS 2 Sets
Hanjin Shipping	54	ZPMC, China	2010	RMG 42 Sets STS 12 Sets
Hyundai Merchant Marine	49	ZPMC, China	2010	RMG 38 Sets STS 11 Sets
Tan Cang International Terminal	26	ZPMC, China	2011	RTG 20 Sets STS 6 Sets
BNCT Co., Ltd.	46	ZPMC, China	2011	RMG 38 Sets STS 8 Sets
Masan I-Port Co., Ltd.	9	HSHI, Korea	2012	RTG 7 Sets STS 2 Sets
Ulsan Dongbang I-Port	4	ZPMC, China	2012	RTG 4 Sets
California United Terminal	2	ZPMC, China	2012	STS 2 Sets
Kaohsiung Hyundai Terminal	1	ZPMC, China	2012	STS 1 Set
Sam-IK Logistic Co., Ltd.	2	STX Dalian, China	2013	RMG 2 Sets
Yeosu Kwangyang Port Authority	1	HSHI, Korea	2013	STS 1 Set
Saudi Global Ports (PSA)	25	TGPC, Abu Dhabi	2014	RTG 6 Sets STS 19 Sets

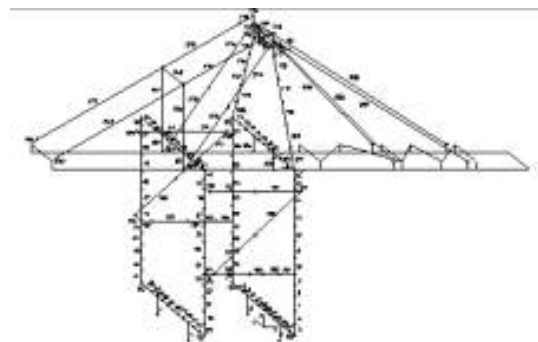
User/Client	No. of Unit	Manufacturer	Built Year	Type of Crane
Sunkwang Newport Container Terminal	19	ZPMC, China	2014	RMG 14 Sets STS 5 Sets



Structure and Safety Analysis



Load Analysis



Beam Element Modeling

5. SITE CONSTRUCTION & OPERATING TEST

Client	Project Name	Inspection Item	Period	Remark
POSCO	Raw Material Handling Facility	- Reclaimer /Stacker - Belt Conveyor - Weighing Scale - Pump/ Motor - Compressor - Gear Reducer - Water Spraying System - Dust Collector - Crusher	Jan. '91- Feb. '92	Supervising of Site Installation and Commissioning
Samsung Petro-Chemical	SPC Expansion Project	- Pressure Vessel - Heat Exchanger - Storage Tank - Piping - Steel Structure	May. '93- Jun. '94	Site Supervision
Dongyang Chemical	CCA Project	- Boiler and BOP	Mar. '94- Mar. '95	Supervising of Site Installation and Commissioning
Seoul City	Ilsan Co-Generation Power Plant	- Boiler - Incinerator & All associated Equipments	Mar. '94- Dec. '95	Supervising of Site Installation and Commissioning
Honam Oil Refinery	P-X Expansion Project	- Pressure Vessel - Heat Exchanger - Storage Tank - Piping, Steel Structure	Oct. '94- Aug. '95	Site Supervision
Hanbo Iron & Steel	Iron & Steel Making Plant	- Mill Housing , Roller Table - Hydraulic Unit - Steel Structure, O/H Crane - Gear Reducer, Motor etc	Nov. '94- Apr. '95	Supervising of Site Installation and Commissioning
Jeil Textile	CPS-8 Project CPF-7 Project KL-8 Project	- Storage Tank - Pressure Vessels	Sep. '96- Dec. '96	Supervising of Site Installation
Yukong	FCC Project	- Storage Tank - Pressure Vessels	Feb. '96- Aug. '96	Supervising of Site Installation
Samsung Corporation	Nonghyup Mulryu Center & Daegu Home Plus Building	-Steel Structure	Oct. '96 Jan. '97	Supervising of Site Installation
Yukong Oxy-Chem	EB/SM Project	- Storage Tank - Pressure Vessels	Jan. '96 Feb. '96	Supervising of Site Installation
Hyundai Oil Refinery	BTX Project	- Storage Tank - Pressure Vessels - Heat Exchanger	Oct. '96- Feb. '98	Supervising of Site Installation
Land Developing Depart	Suwon Co-Generation Power Plant	- Steel Structure	Oct. '97- May '99	Supervising of Site Installation
SKC	Revamping Project	-Pressure Vessel, Tower -Heat Exchanger	Feb.'03- Jul. '05	Supervising of Site Installation
HDO	Clean Fuels Project	-Reactor, Tower, H/E, Reformer -Rotating Machineries -Steel Structure	Aug. '04- Nov.'05	Supervising of Site Installation
GS E&C	Lidong Project, China	-Pressure Vessel, H/Ex -Piping	Nov. '05- Jul. '06	Inspection of Site Installation
GS E&C	GS Caltex, HOU Pjt	-P/V, H/Ex -Tower/Column/Drum -Steel Structure	Apr. '05- Apr. '06	Inspection of Site Installation

6. MAINTENANCE INSPECTION

Client	Project Name	Inspection Item	Place	Period	Remark
Hyundai Petro Chemical	Turn-Around Inspection	- Tower , Drum - Reactor - Furnace, Boiler - Heat Exchanger - Co-Generator - Piping.	Daesan	Mar. '94- May. '94.	- MCC Plant - BRU Plant - SM Plant - EO/EG Plant - Polymer Plant - UT/OS
Hyundai Oil Refinery.	Turn-Around Inspection	- Tower, Drum - Reactor - Furnace, Boiler - Heat Exchanger - Air Fin Cooler - Piping	Daesan	Oct. '94- Dec. '94-	- Process Unit - UT/OS Unit * Refurbishing Work included
			Ulsan		
Hyundai Oil Refinery	Turn-Around Inspection	- Tower, Drum - Reactor - Furnace, Boiler - Heat Exchanger - Air Fin Cooler - Piping	Daesan	May '95- Jun. '95-	- Process Unit - UT/OS Unit
Hyundai Petro Chemical	Turn-Around Inspection	- Tower, Drum - Reactor - Furnace, Boiler - Heat Exchanger - Co-Generator - Piping	Daesan	May '96- Jun. '96	- NCC Plant - BRU Plant - SM Plant - EO/EG Plant - Polymer Plant - UT/OS
Hyundai Oil Refinery	Turn-Around Inspection	- Tower, Drum - Reactor - Furnace, Boiler - Heat Exchanger - Air Fin Cooler - Piping	Daesan	May '00	- Process Unit - UT/OS Unit
Hyundai Petro Chemical	Turn-Around Inspection	- Tower, Drum - Reactor - Furnace, Boiler - Heat Exchanger - Co-Generator - Piping	Daesan	Apr. '01- May '01	- NCC Plant - BRU Plant - SM Plant - EO/EG Plant - Polymer Plant - UT/OS
Hyundai Oil Refinery	Turn-Around Inspection	- Tower, Drum - Reactor - Furnace, Boiler - Heat Exchanger - Air Fin Cooler - Piping	Daesan	May '01- Jun. '01	- Process Unit - UT/OS Unit
Hyundai Oil Bank	Turn-Around Inspection	-Tower, Drum -Reactor -Heat Exchanger -Piping	Daesan	Jun.'05- Jul. '05	-BTX -Process Unit

7. OFF-SHORE STEEL STRUCTURE

Client	Project Name	Equipment	Manufacturer	Performed Period
SSB	Sarawak Shell Behard Project	Jacket	Hyundai Heavy Industries Co., Ltd.	1997
ZULF	Zulf GOSP #3 & #4 Project	Module	Daewoo Shipbuilding Co., Ltd.	1998
TEXACO	Texaco Havest Project	Module	Daewoo Shipbuilding Co., Ltd.	1998
SHEVRON	Shevron Ester Project	Jacket & Module	Daewoo Shipbuilding Co., Ltd.	1999
RICABAJA	KODECO Project	Jacket & Module	Daewoo Shipbuilding Co., Ltd.	1999
SHELL-USA	Shell Bonga FPSO Project	Mooring System	Haeduk Sungi	2001
Sakhalin Energy	Sakhalin Energy EP-II Project	Piping	SHI	2005~2006



8. STEEL STRUCTURE(STEEL BRIDGE, BUILDING STRUCTURE)

Client	Project Name	Weight (Ton)	Performed Period
Busan Regional Ministry of Construction	Steel Bridge for Eonyang-Bumseo Road	8,000	2000 - 2001
Busan Regional Ministry of Construction	Steel Bridge for Bumseo-Ulsan Road	3,000	2000 - 2001
POSCO	Steel Bridge/ Kumdang Bridge	12,000	2000 - 2002
Iksan Regional Ministry of Construction	Steel Bridge for Muan Detour Road	2,700	2000 - 2001
Gwangju Metropolitan City	Space Frames for World Cup Soccer Stadium of Gwangju	3,200	2000 - 2001
Hyundai Construction Co.	Steel Structures for Hyperion Building	20,000	2000 - 2002
Seoul Regional Ministry of Construction	Steel Bridge for Tongil Grand Bridge-Jangdan Road	4 700	2001
Cholla Namdo Provincial Government	Steel Bridge for Tamjindam Detour Road	2,600	2001
Hamam-Gun	Steel Bridge for Iryong Bridge	1,000	2001
Seoul Regional Ministry of Construction	Steel Bridge for Nasuk-Dapnae Road	8,300	2001
Busan Regional Ministry of Construction	Steel Bridge for Chilseo-Youngsan Road	4,800	2001
Iksan Regional Ministry of Construction	Steel Bridge for Samsan-Haenam Road	4,600	2001
Iksan Regional Ministry of Construction	Steel Bridge for Munae-Hwangsan Road	9,600	2001 - 2002
Iksan Regional Ministry of Construction	Steel Bridge for Sungduk-Daeya Road	7,800	2001 - 2002
Iksan Regional Ministry of Construction	Steel Bridge for Gumma-Yeonmuda Road	2,000	2001
Iksan Regional Ministry of Construction	Steel Bridge for Jeoksang-Seolchon Road	1,900	2001

Client	Project Name	Weight (Ton)	Performed Period
Busan Regional Ministry of Construction	Steel Bridge for Hapchon-Ssangrim Road	2,600	2001 - 2002
Gimhae City	Nongso Bridge	400	2001
Gunsan Regional Ministry of Maritime & Fishery	Steel Structures for Starch Warehouse, Gunsan Port	1,200	2001
Egyptian Tele-Communication Co.	Steel Structures for Head Office of Egyptian Tele communication Co.	2,100	2001
Samsung Electronics Co., Ltd.	Steel Structures for Suwon IT Research & Development Center Building	12,000	2001
SPECO Heavy Ind. Co., Ltd.	Taiwan High Speed Rail Movable Scaffolding System	4,000	2001 - 2002
Gimhae City	Gimhae Bridge	2,900	2002
Seoul Regional Ministry of Construction	Steel Bridge for Tongil Bridge-Jangdan Road	1,080	2002 - 2003
Busan Regional Ministry of Construction	Steel Bridge for Namji-Youngsan Road	14,127	2002~2003
Busan Regional Ministry of Construction	Steel Bridge for Naeseo-Jungri Road	14,400	2002~2005
Daejeon Regional Ministry of Construction	Steel Bridge for Chupoongryong Detour Road	1,402	2002~2003
Gwangju City	Steel Bridge for Pyong-Dong Ind. Complex Road (1 st Work Section)	10,383	2002~2003
Gwangju City	Steel Bridge for Pyong-Dong Ind. Complex Road (2 nd Work Section)	6,378	2002~2003
Gwangju City	Steel Bridge for Pyong-Dong Ind. Complex Road(3 rd Work Section)	3,996	2002~2003
Gwangju City	Steel Bridge for Pyong-Dong Ind. Complex Road(4 th Work Section)	3,364	2002~2003
Cheongju City	Steel Bridge for Detour Road between Nam-Myeon and Buk-Myeon	4,026	2002~2004
Gangneung City	Steel Bridge for Intersection of 7 th National Road	1,167	2002~2003
Korea Road Corporation	Steel Bridge for Daegu-Pohang Highway Const. Project	7,060	2002~2003
Korea Road Corporation	Steel Bridge for 5 th Work Section of Donghae Highway Const. Project	3,000	2002~2003

Client	Project Name	Weight (Ton)	Performed Period
Korea Highway Corporation	Steel Bridge for Gwanju detour Road Const. Project	4,900	2002~2003
Korea Highway Corporation	Steel Bridge for Daegu-Busan Highway Construction Project	8,800	2002~2004
Korea Agricultural Corporation	Steel Gates for Saemangeum Project	7,000	2002~2004
Masan City	Steel Bridge for Jeodo-Masan Road	1,800	2003
Seoul Regional Ministry of Construction	Steel Bridge for Jangan-Balan Road	3,530	2003~2004
Busan Regional Ministry of Construction	Steel Bridges for Hyungdong-Naeseo Road	7,500	2003~2005
Busan Regional Ministry of Construction	Steel Bridge for Andong Detour Road	5,300	2003~2004
Daejeon Regional Ministry of Construction	Steel Bridge for Kuryong-Buyeo Road	14,000	2003~2004
Iksan Regional Ministry of Construction	Steel Bridge for Muju-Haksan Road	4,700	2003~2004
Iksan Regional Ministry of Construction	Steel Bridge for Gwangju-Jangsung Road	3,762	2003~2004
Iksan Regional Ministry of Construction	Steel Bridge for Dongmyeon-Yongpo Road	875	2003~2004
Samsung Electronics Co., Ltd.	Steel Structures for Cheonan C6 Project	2,000	2003
Doosan Construction Co, Ltd.	Steel Structures for Paju Books warehouse Const. Project	5,000	2003
Daejeon Regional Ministry of Construction	Steel Bridge for Haemi-Duksan Road	2,945	2003
Suwon City	Steel Bridge for Hotel Castle-East Suwon IC Road	1,770	2003
Government of Cholla Namdo Province	Steel Bridge / Repairing Project for Godal Bridge	1,711	2003
Government of Cholla Namdo Province	Steel Bridge for Geum Cheon-Sigye Road	767	2003

Client	Project Name	Weight (Ton)	Performed Period
Korea Land Corporation	Steel Bridge for Intersection of Yong-il and Pungdeok	3,300	2003
Samsung Corporation	Steel Structures for KIMTEX Const. Project	8,000	2003~2004
Government of Cheju Province	Steel Bridge for Seosung Road Const. Project	750	2003
Chungju City	Steel Bridge for Detour Road between Pung Dong and Yong Du	6,350	2003~2004
Yong-In City	Steel Bridge for Singal-Suji Road	15,500	2003~2005
Korea Highway Corporation	Steel Bridge for Seochon-Gongju Highway Construction Project	9,000	2004~2005
Gwang Ju City	Steel Bridge for Young-Kwang Line Construction Project	3,500	2004 ~ 2005
Government of Cholla Namdo	Steel Bridge/ Aphae Grand Bridge Construction Project	18,000	2005 ~ 2007
Dongbu Engineering	Steel Bridge / Nakdong rail road bridge Construction Project	13,800	2005~2006
Hyundai Automobile Co., Ltd.	Steel Structure / HMI India Plant New Office Building Construction Project	15,000	2006
Seoul-Chuncheon Highway Corp.	Steel Bridges / Seoul-Chuncheon #60 Highway Construction Project(#8 Section)	1,519	2006
Kyungki Highway Corporation	Steel Bridges / Seo Suwon-Osan-Pyong taek Highway Construction Project (#1 Work Section)	3,949	2006~2008
Kyungki Highway Corporation	Steel Bridges / Seo Suwon-Osan-Pyong taek Highway Construction Project (#2 Work Section)	12,179	2006~2007
Kyungki Highway Corporation	Steel Bridges / Seo Suwon-Osan-Pyong taek Highway Construction Project (#3 Work Section)	8,475	2006~2008
Kyungki Highway Corporation	Steel Bridges / Seo Suwon-Osan-Pyong taek Highway Construction Project (#4 Work Section)	2,613	2006
Kyungki Highway Corporation	Steel Bridges / Seo Suwon-Osan-Pyong taek Highway Construction Project (#7 Work Section)	5,944	2005~2008

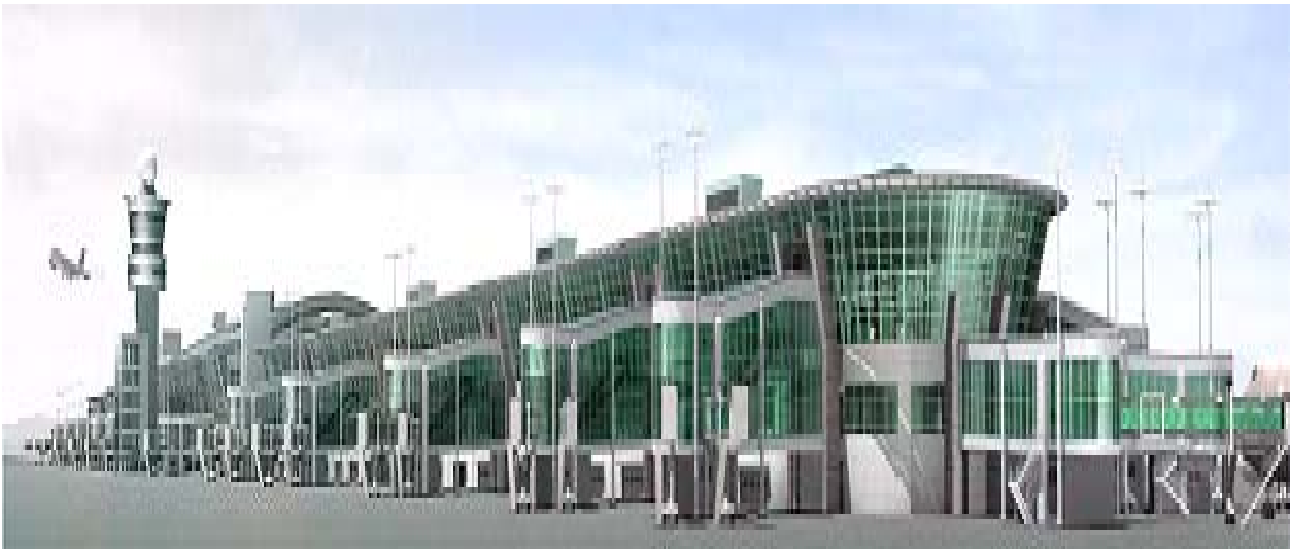
Client	Project Name	Weight (Ton)	Performed Period
Incheon Airport Corporation	Steel Structures / Incheon Airport 2 nd Stage Passenger's Terminal A Construction Project	35,000	2005~2006
Dongbu Engineering	Steel Bridge / Hwajang Railroad Bridge Construction Project	1,200	2006
Hanmi Parsons	Steel Structures / Songdo Convention Center Construction Project	8,500	2006
Korea Road Corporation	Steel Bridge / Incheon Grand Bridge Connecting Road Construction Project	9,390	2007~2009
Korea Land Corporation	Steel Bridge / Poongdeok Cheon Overpass Bridge Construction Project	1,629	2007
Eom & Lee Architect	Steel Structures / Christian Congregation Construction Project	8,000	2007
Cheongsim Association, Moonism /Cheongshim church	Steel Structure (Roof Truss, Space Frame) for Cheongsim Gymnasium Construction Project	4,200	2010~2011
Busan Metropolitan Government	Steel Structure for BEXCO Facilities Expansion Project (Exhibition Hall, Auditorium, Connection Passage)	11,564	2010~2011
Hyundai Steel Co., Ltd.	Steel Structure for Hyundai Blast-Furnace #3 (Thick Plate Mill) Construction Project	57,000	2011~2012
Hyundai Hysco Co., Ltd.	Steel Structure for ColdRolling Mill(CGL Plant) #2 Construction Project	26,000	2012~2013
Geumho Harbor Co., Ltd./ E-Teck Co., Ltd.	Steel Structure for Coal Terminal of Yeosu NakpoWharf	3,994	2012
Busan Finance Center PFV	Steel Structure for Busan International Financing Center Construction Project	1,500	2012~2013
POSCO E&C	Steel Structure for Brasil Steel CSP Steel Making Plant Construction Project	15,441	2012 ~ 2013

Client	Project Name	Weight (Ton)	Performed Period
ETEC E&C Ltd.	Steel Structure for Hadeed Straightening Shop Project(HSSP), Kirby,Kuwait	2,000	2013
POSCO/ China	Steel structure for Beijing POSCO Center Construction Project	12,000	2012~2013
Korea University/ Hyundai AMCO	Steel Structure for Business Management Building Construction Project	1,800	2012
Korea Southern Power Co. Ltd./ GS E&C	Steel Structure & Key Component for Andong Combined Cycle Power Plant Construction Project	1,519	2012~2013
Seogwipo City	Steel Structure for Seogwipo Culture Center Construction Project	891	2012~2013
Korea Southern Power Co. Ltd/ Hyundai E&C	Steel Structure for Samcheok Green Power Construction Project	6,162	2013~2014
Hyundai E&C/Geumbo	Steel Structure for Hyundai Iron Powder Shop Constructon Project	2,600	2013~2014
Korea Southern Power Co. Ltd/ Shin Tek Co.	Steel Structure for Buckstay of Samcheok Power Construction Project	4,465	2013
Hyundai WIA/ Hyundai AMCO	Steel Structure for Hyundai WIA Gwangju Module Shop Construction Project	1,500	2013
Daewoo E&C / Daewoo ST	Steel Structure for Songdo OK Center Construction Project	5,536	2013
NHN Co., Ltd.	Steel Structure for Chuncheon NHN Knowledge Information Campus Construction Project	2,635	2013~2014
Daejeon Regional Construction and Management Administration	Water gate facilities for Geum-river restoration project work section #6 (Buyeo-weir, 2 sets shell roller gate, Stop log, Hoisting device etc.)	1,700	2010~2011
Igsan Regional Construction and Management Administration	Water gate facilities for Yeongsan-river restoration project work section #2(Jugsan-weir, Shell type roller gate, Stop log, Ship passage roller gate, Hoisting device etc.)	2,685	2010~2011

Client	Project Name	Weight (Ton)	Performed Period
Gyeongsangbug-do Provincial Government	Precom-Beam & Pumping station facilities for Nagdong-river restoration project work section #36	-	2011~2012
Cheon-An City	Steel Bridge for Cheon-An Southern Part Wide Road (Tongjeong District) Construction Project	1,875	2008~2009
Korea Land & Housing Corporation	Steel Bridge (Arch) for Incheon Cheongla Economic Free Zone Development Project Section #5(Shingog 4-Gyo)	1,622	2009
Korea Land & Housing Corporation	Steel Bridge (8EA) for Namyangju Byeolnae District Development Project(Section#1)	7,321	2009 ~ 2010
Daegu Metropolitan Government	Steel Bridge for Daegu Light Rail Transit Line 3 Construct project(work section #3-4)	6,830	2010~2012
Incheon Economic Free Zone Authority	Cable stayed Steel Bridge for access road to Songdo international city work section #5 & #7 construction project	3,043	2012~2013
JDC/JPM Engineering	Steel Bridges for Seogwipo si bypass road Construction Project(Sanghyo-Harye)	455	2009
JDC/Taewon Corporation	Steel Bridges for Gwangryeong-Aewolsamgeori Construction Project	1,121	2010
Daejeon city/ Seoyeong Engineering	Steel Bridges for Sintanjin Eupnaesangga-Wadong pedestrian Br Construction Project(Sintanjin Line)	1,676	2013
Iksan city / Shinseong Engineering	Steel Bridges for Access to Iksan general industry complex Construction Project	2,600	2013
Jeollanam-do Provincial Government	Steel Bridges for Access to Yeosu National Industry Complex Construction Project(#4 Work Section)	2,897	2010~2011



Ab-Hae Grand Bridge



Passenger's Terminal "A" of Incheon International Airport

X. ATTACHMENTS

(Translated in English)

Certificate of Authorized Inspection Company for Port Equipments

No.2013-4

NAME : Korea Technology Inspection Co., Ltd.
ADDRESS : Any-tower(8F), 7, Gangnam-daero 53-gil, Seocho-gu, Seoul, Korea
PRESIDENT : Jong Hee, Hong

According to the phase 4 of article 12 of the Management Regulation for Harbour Facilities, the above mentioned company has been authorized to inspect and survey harbour facilities in Korea.

Aug. 27, 2013

The Minister of Maritime Affairs & Fisheries

제 2013-4 호

항만시설장비 검사대행기관 지정서

명 칭 : 코리아테크인스펙션(주)
주 소 : 서울시 서초구 강남대로 53길 7, 803(서초동, 애니타워)

대표자 성명 : 홍 종 희

위 법인을 항만법 제28조 및 항만시설장비관리규칙 제12조 제4항에 따라 항만시설장비 검사대행기관으로 지정합니다.

2013년 08월 27일

※ 재발급사유 : 사업장 소재지 변경

해양수산부장관 (인)



Registration No. : E-15-94

Certificate of Engineering Subject

Company Name : Korea Technology Inspection Co., Ltd.
President : Jong Hee, Hong
Address : Any-tower(8F), 7, Gangnam-daero 53-gil, Seocho-gu, Seoul, Korea
Date : July 9, 1994

According to the phase 1 of Article 7, 21 of The Regulation of Engineering Technology Promotion, certified that the above mentioned company is registered as engineering subject.

Aug. 02, 2013

Korea Engineering Promotion Association



[별지 제9호서식]

엔지니어링사업자 신고증

명 칭	코리아테크인스펙션(주)		
대표자성명	홍종희	생년월일	1959.01.24
소재지	서울특별시 서초구 강남대로53길 7 8층(서초동, 애니타워)	전화번호 (FAX, E-Mail)	02-2635-4712 02-2635-4726
엔지니어링업	신고번호	제 E-15-94 호	
	기술부문	기계 등	4 개 부문
	전문분야	일반산업기계 등	5 개 분야
엔지니어링 컨설팅업	신고번호	제 호	
	기술부문	등	개 부문
	전문분야	등	개 분야
신고연월일	1994년 07월 09일		

「엔지니어링산업 진흥법」 제21조제1항 및 같은 법 시행규칙 제7조에 따라 위와 같이 신고하였음을 증명합니다.

2013년 08월 02일

한국엔지니어링협회장



Risk Solutions



HSB Registration Services
595 E. Swedesford Road
Wayne, Pennsylvania 19087

Certificate of Registration

This is to certify that:

Korea Tech. Inspection Co., Ltd.
#803, Anytower, 7, Gangnam-daero 53-gil, Seocho-gu,
Seoul, Korea

Has established and applied a Quality Management System for:
Inspection of Plant Equipment, Steel Structures and
Harbor Equipment

Proof has been furnished that the requirements according to
ISO 9001:2008
are fulfilled.

Certificate Number: Q 1442

Initial Audit Date: June 17, 2010
Effective Date: June 24, 2016
Expiration Date: September 15, 2018
Revision Date: January 1, 2017


Signed on behalf of HSB Registration Services



Hartford Steam Boiler



Certificate Number: Q 1442
Page 1 of 1

(Translated in English)

CERTIFICATE OF REGISTERED SUPERVISORY COMPANY

Registered No : No. Seoul-2-29

NAME : KOREA TECHNOLOGY INSPECTION CO., LTD.

ADDRESS : Any-tower(8F), 7, Gangnam-daero 53-gil, Seocho-gu, Seoul, Korea

NATION : KOREA

PRESIDENT : JONG HEE, HONG (Personal ID : 590124-1929418)

FIELD OF INSP & SUPERVISION: MECHANICAL EQUIPMENTS

REGISTERED DATE: Jul. 04, 2014

According to the phase 1 of Article 26 of the Construction Technology Promotion Regulation, the above mentioned company has been registered to inspect and supervise the mechanical Equipments.

Jul. 04, 2014

The Minister of Seoul Regional Ministry of Construction

등록번호 : 서울-2-29호



건설기술용역업 등록증

상호 또는 법인명 : 코리아테크인스펙션(주)

영업소의 소재지 : 서울특별시 서초구 강남대로53길 7, 803호(서초동)

소속 국가 명 : 대한민국

성명 (대표자) : 홍종희 생년월일 : 1959년 01월 24일

전문분야(세부분야) : 설계-사업관리 (건설사업관리)

등록연월일 : 2014년 07월 04일

「건설기술 진흥법」 제26조제1항에 따라 건설기술용역업자로 등록하였음을 증명합니다.

2014년 07월 04일

서울특별시



CERTIFICATE OF REGISTRATION FOR BUSINESS OF NDE

Registration No: 2006-29

Company Name : Korea Technology Inspection Co, Ltd.

Representative : Hong, Jong-Hee (590124-1929418)

Location of Company: 4th Fl of Daesung Bld., #162-8, 2-Ga, Dongsan-Dong, Youngdeungpo-Gu,
Seoul

Initial Registered Date: 28 Mar. 2006

Method of Examination: UT, PT, MT (Three Methods)

I hereby certify that the above company has been registered for business of NDE according to the requirement of Article 11 of "Law for Promotion and Management of NDE Technology"

MINISTER OF SCIENCE AND TECHNOLOGY

비파괴검사업 등록증

등록 번호 : 2006 - 29

상 호 : 코리아테크인스펙션(주)

대 표 자 : 홍 송 희 (590124-1929418)

소 재 지 : 서울시 영등포구 당산동 2가 162-8 대성 B/D 4층

최초등록일 : 2006. 3. 28

검 사 방 법 : UT, PT, MT (3개 방법)

「비파괴검사기술의 진흥 및 관리에 관한 법률」 제11조의 규정에 따라 비파괴검사업의 등록을 하였음을 증명합니다.

2006년 3월 28일

과 학 기 술 부 장 관



(Translated in English)

Certificate of Authorized Inspection Company for Safety Inspection of Stage facility

No.2012-1

NAME : Korea Technology Inspection Co., Ltd.
PRESIDENT : Jong Hee, Hong
ADDRESS : #162-8, 2Ga, Dangsang-dong, Youngdeungpo-Gu, Seoul, Korea

According to the phase 5 of article 10 of the Performance law enforcement ordinance, the above mentioned company has been authorized to Safety inspection of Stage facility in Korea.

May. 09, 2012

The Minister of Culture, Sports and Tourism

무대시설 안전진단 전문기관 지정서

- 지정번호 : 제2012 - 1호
- 기관명 : 코리아테크인스펙션(주)
- 대표자 : 홍종희 (590124-1*****)
- 소재지 : 서울특별시 영등포구 당산동 2가 162-8

공연법시행령 제10조제5항의 규정에 의하여
무대시설 안전진단 전문기관으로 지정합니다.

2012년 5월 9일

문화체육관광부장관

